

Do Mesh Stents Improve Outcome?

Case Examples

March 2019

Dr. Carlos Alejandro Alvarez

Hospital Privado del Sur, Hospital Italiano
Regional del Sur, Hospital Regional Español
De la Ciudad de Bahia Blanca,
Buenos Aires, Argentina

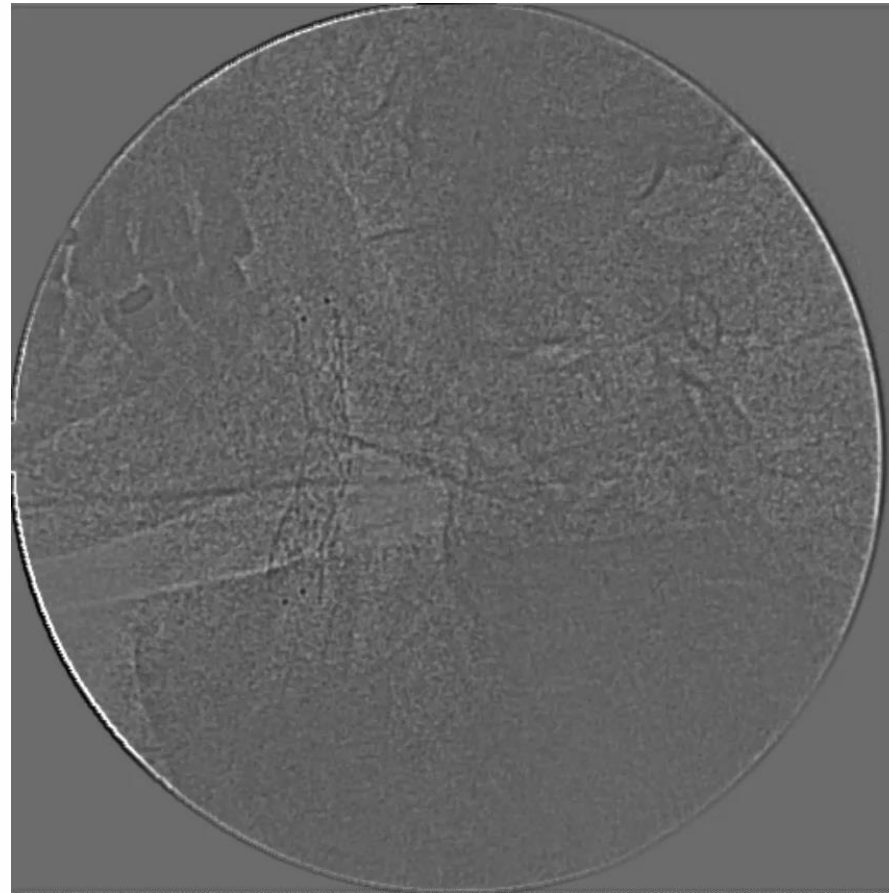
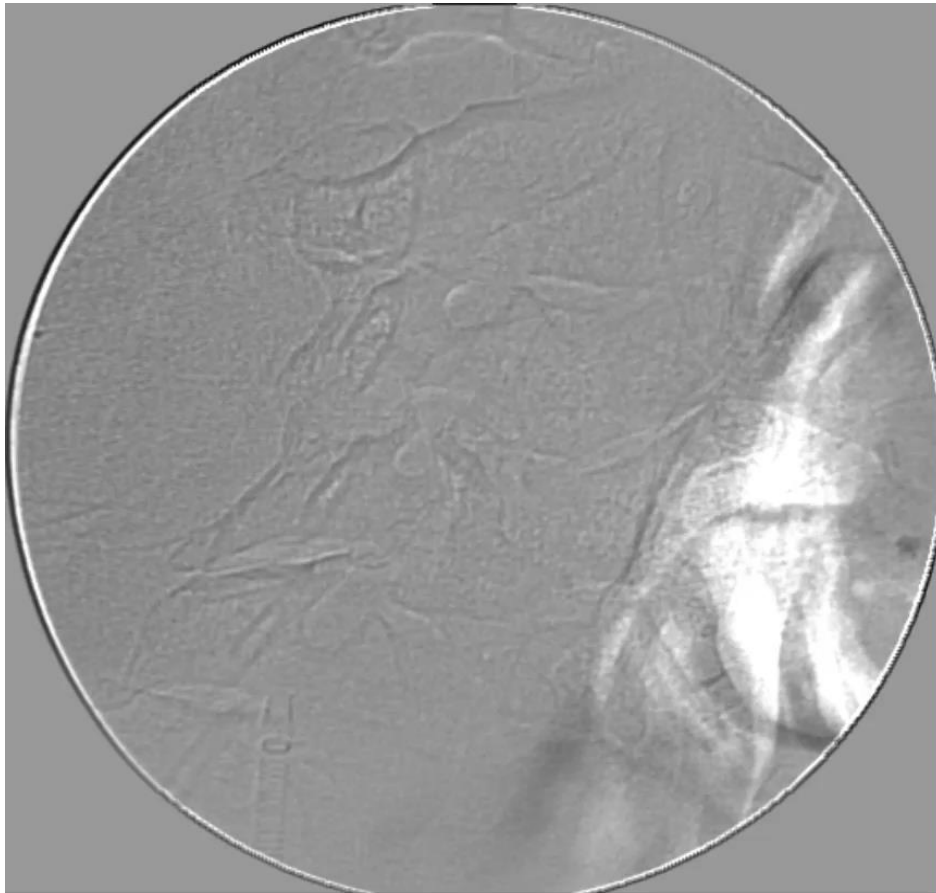
Clinical Case I

- 70 male, Hipertension, Dyslipidemia, Diabetes type II.
- Screen echo: Severe stenosis of both internal carotid arteries.
- Normal renal function.
- Without cardiovascular past history.

Bilateral Internal Carotid Disease

CGUARD™
Carotid Embolic Prevention System

ICCA
STROKE

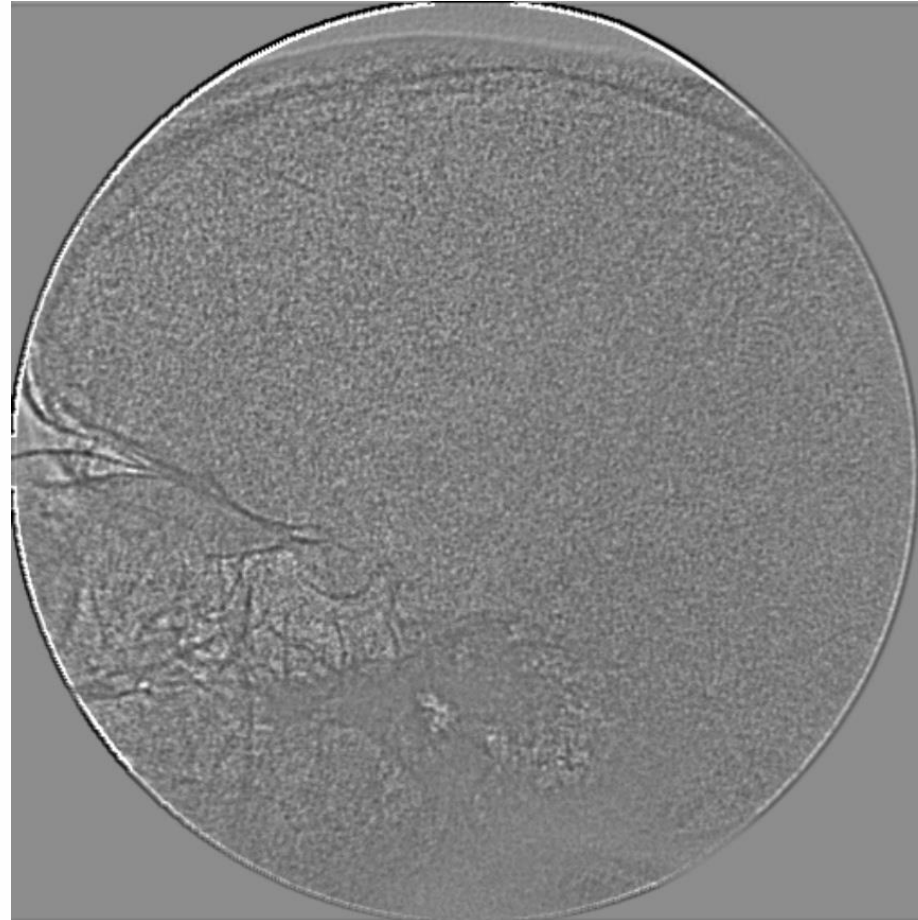
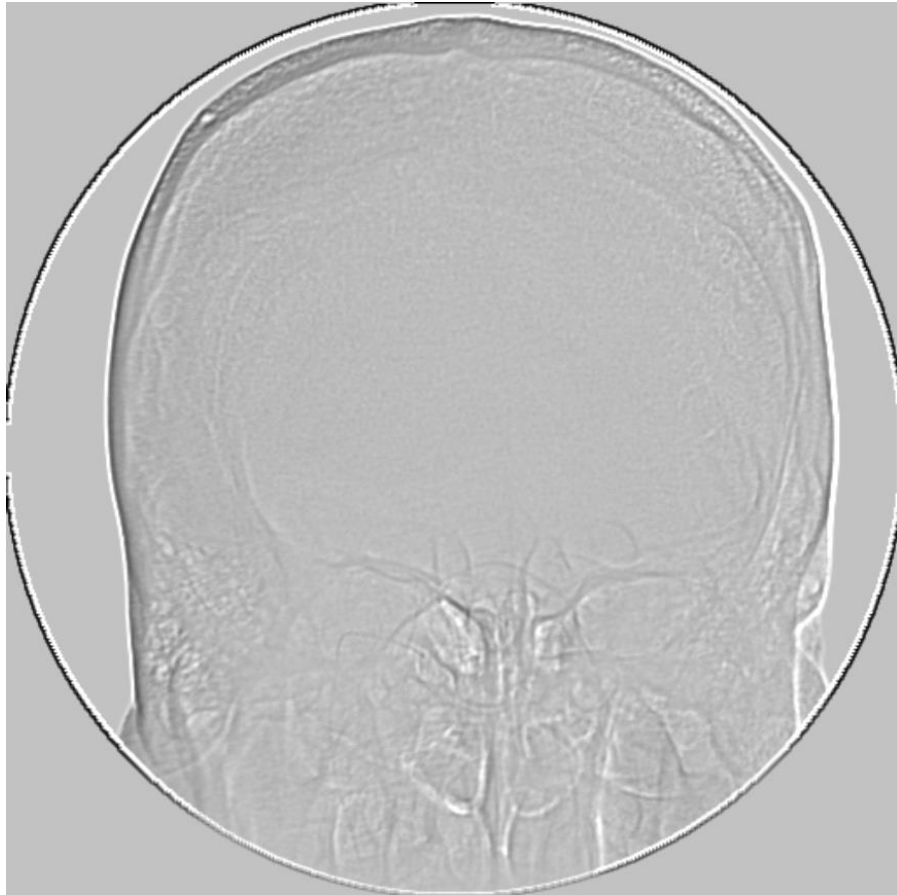


InspireMD

Bilateral Internal Carotid Disease

CGUARD™
Carotid Embolic Prevention System

ICCA
STROKE

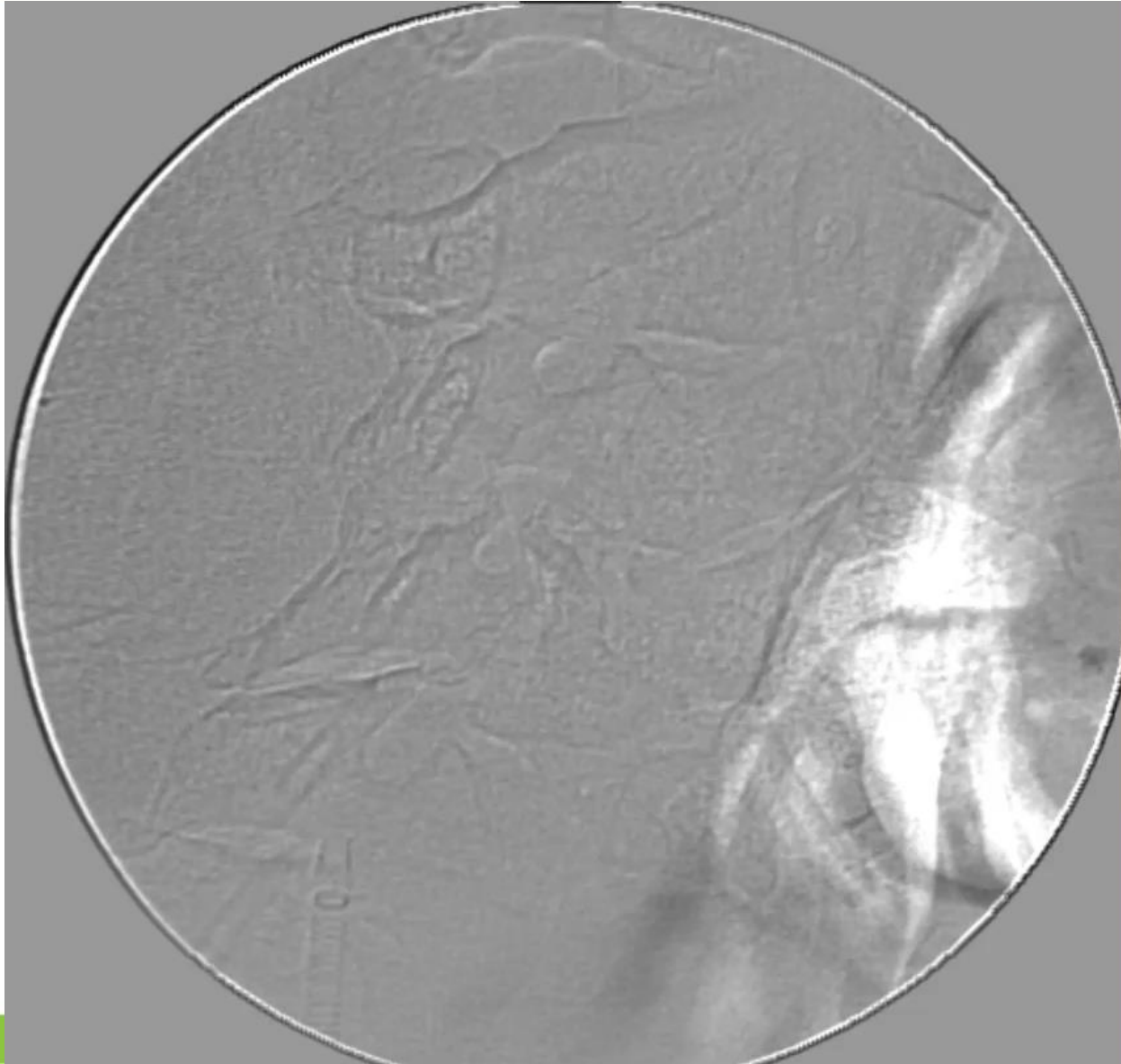


InspireMD

Bilateral Internal Carotid Disease

CGUARD™
Carotid Embolic Prevention System

ICCA
STROKE



InspireMD

Bilateral Internal Carotid Disease

CGUARD™
Carotid Embolic Prevention System

ICCA
STROKE



InspireMD

Bilateral Internal Carotid Disease

CGUARD™
Carotid Embolic Prevention System

ICCA
STROKE



InspireMD

Bilateral Internal Carotid Disease

CGUARD™
Carotid Embolic Prevention System

ICCA
STROKE



InspireMD

Bilateral Internal Carotid Disease

CGUARD™
Carotid Embolic Prevention System

ICCA
STROKE

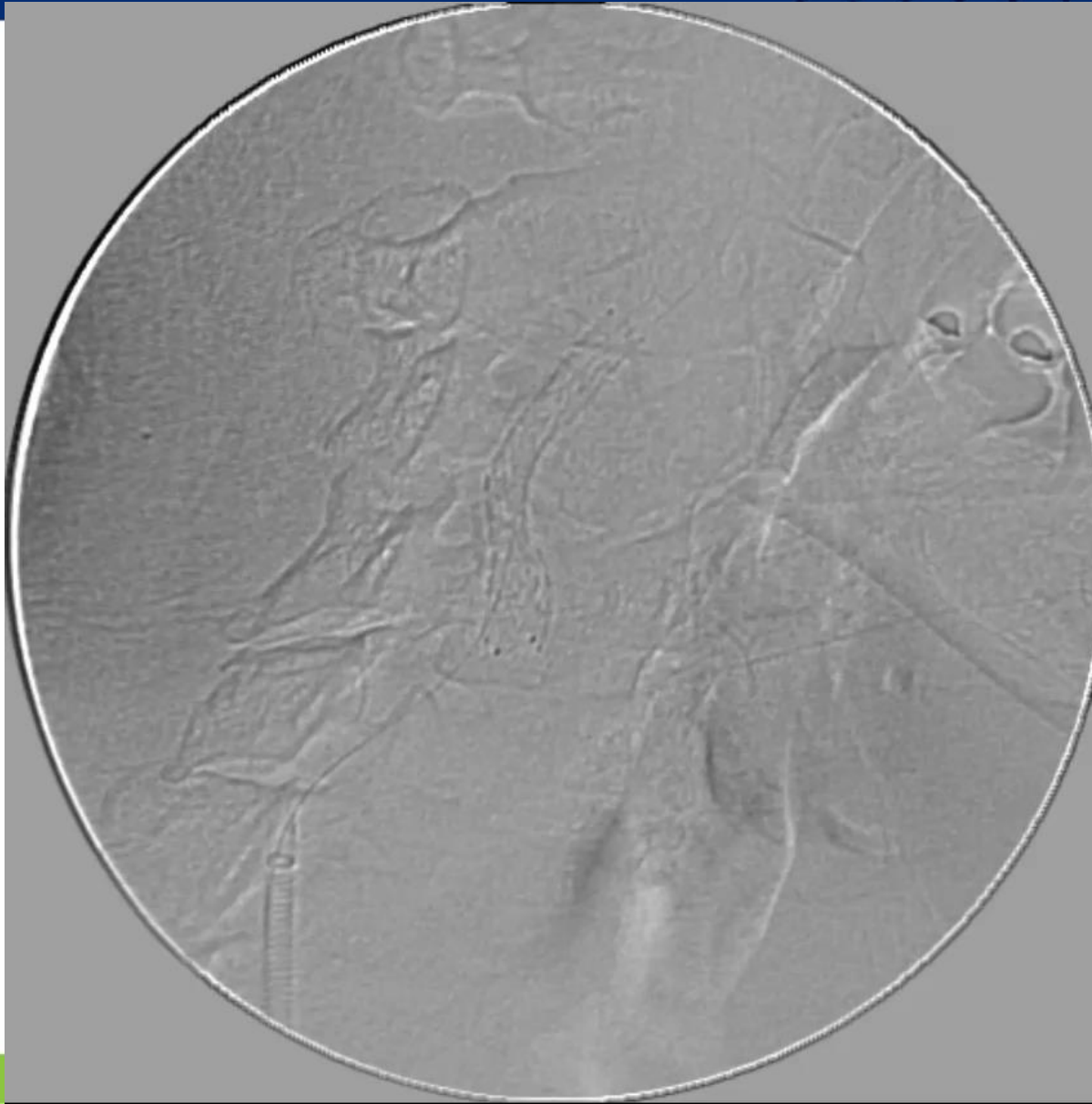


InspireMD

Bilateral Internal Carotid Disease

CGUARD™
Carotid Embolic Prevention System

ICCA
STROKE

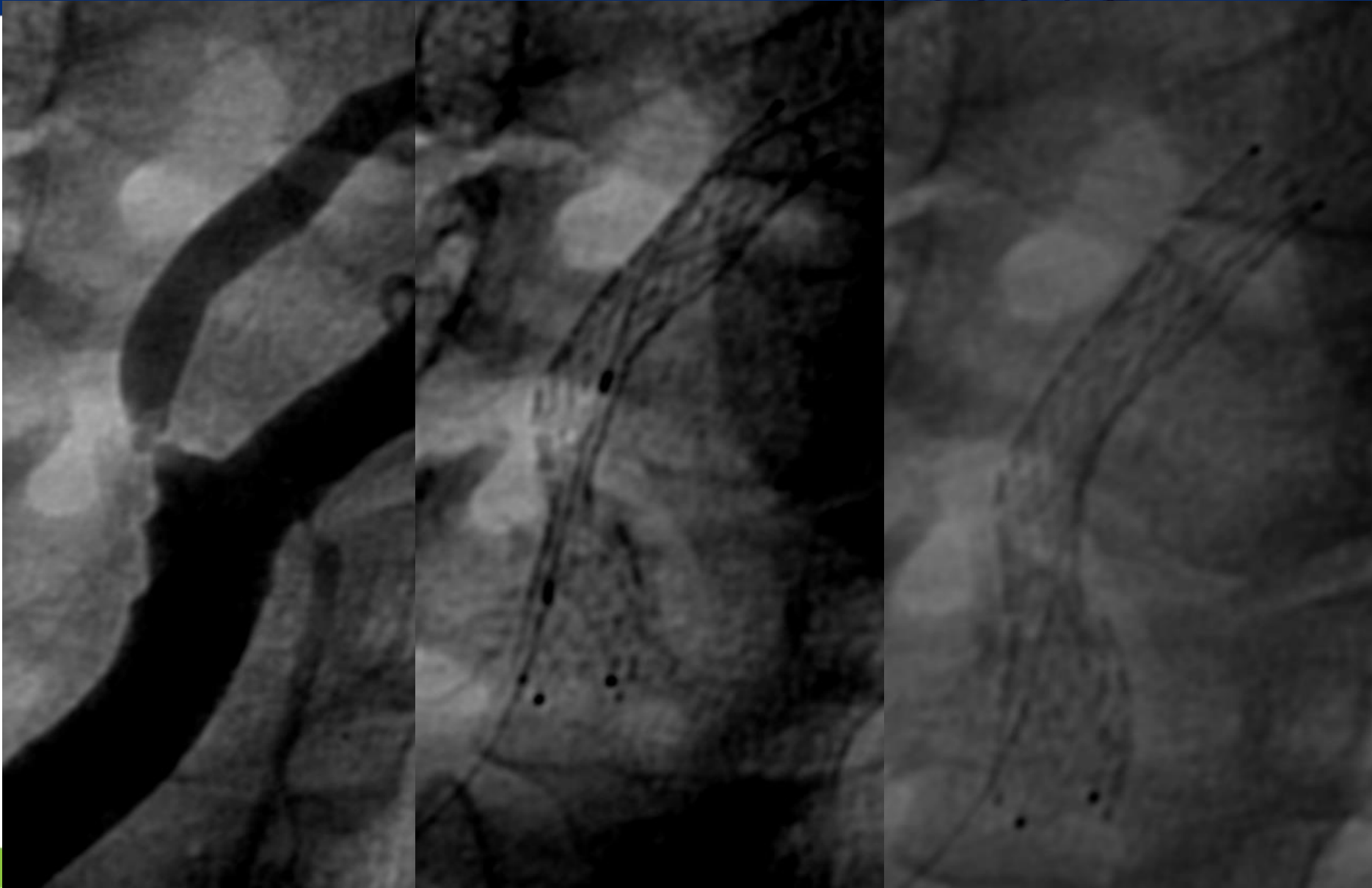


InspireMD

Bilateral Internal Carotid Disease

CGUARD™
Carotid Embolic Prevention System

ICCA
STROKE

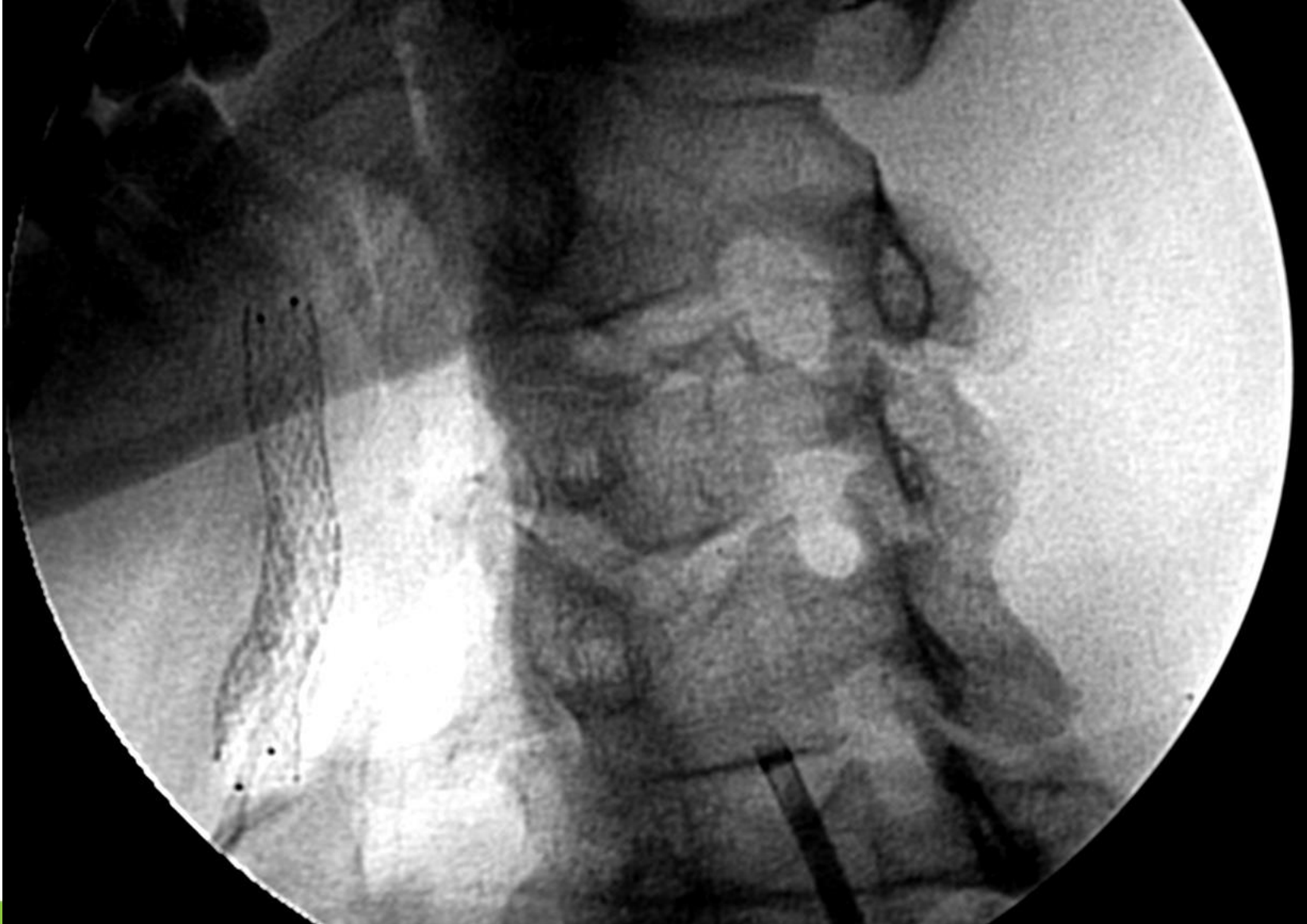


InspireMD

Bilateral Internal Carotid Disease

CGUARD™
Carotid Embolic Prevention System

ICCA
STROKE

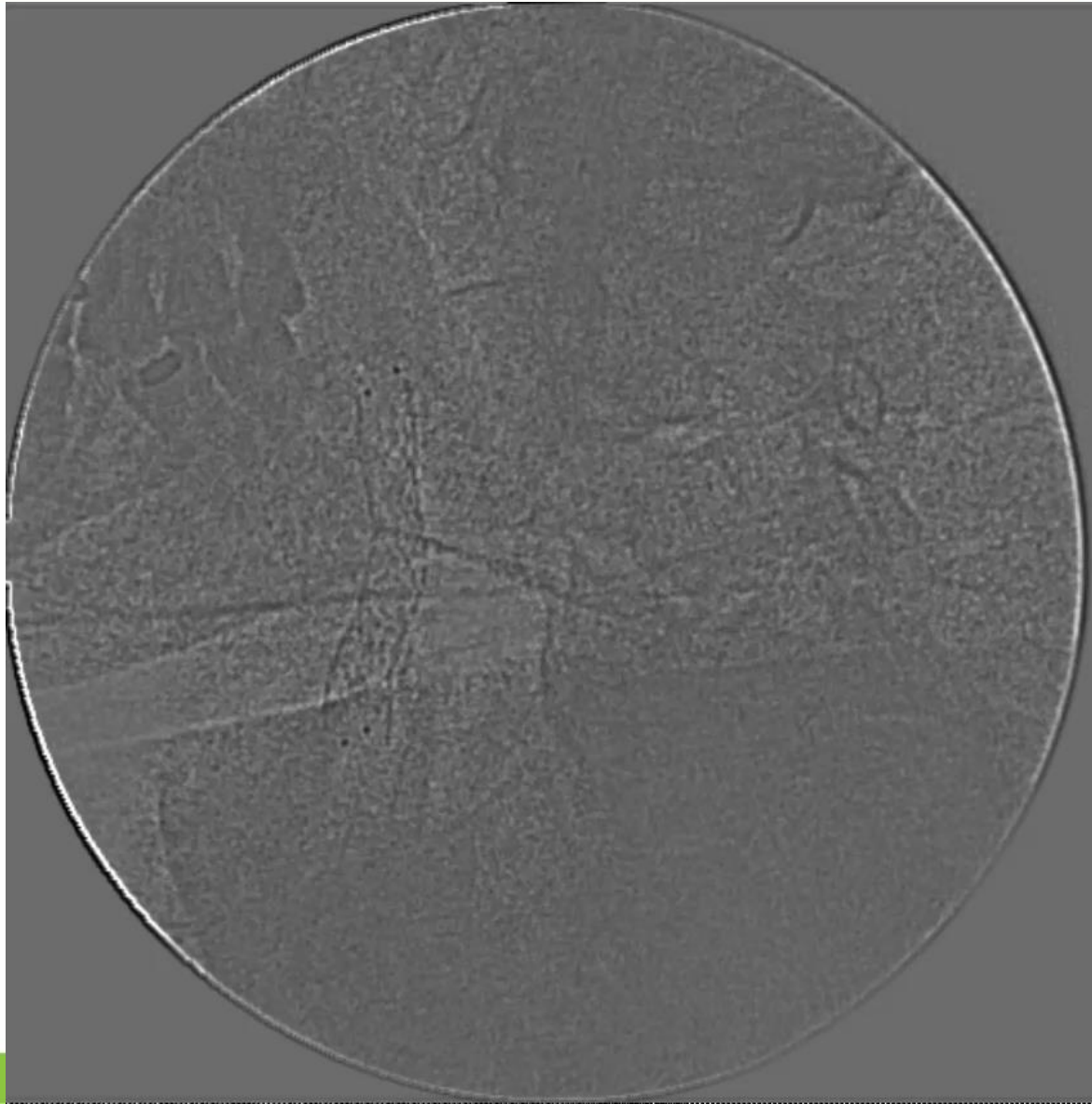


InspireMD

Bilateral Internal Carotid Disease

CGUARD™
Carotid Embolic Prevention System

ICCA
STROKE

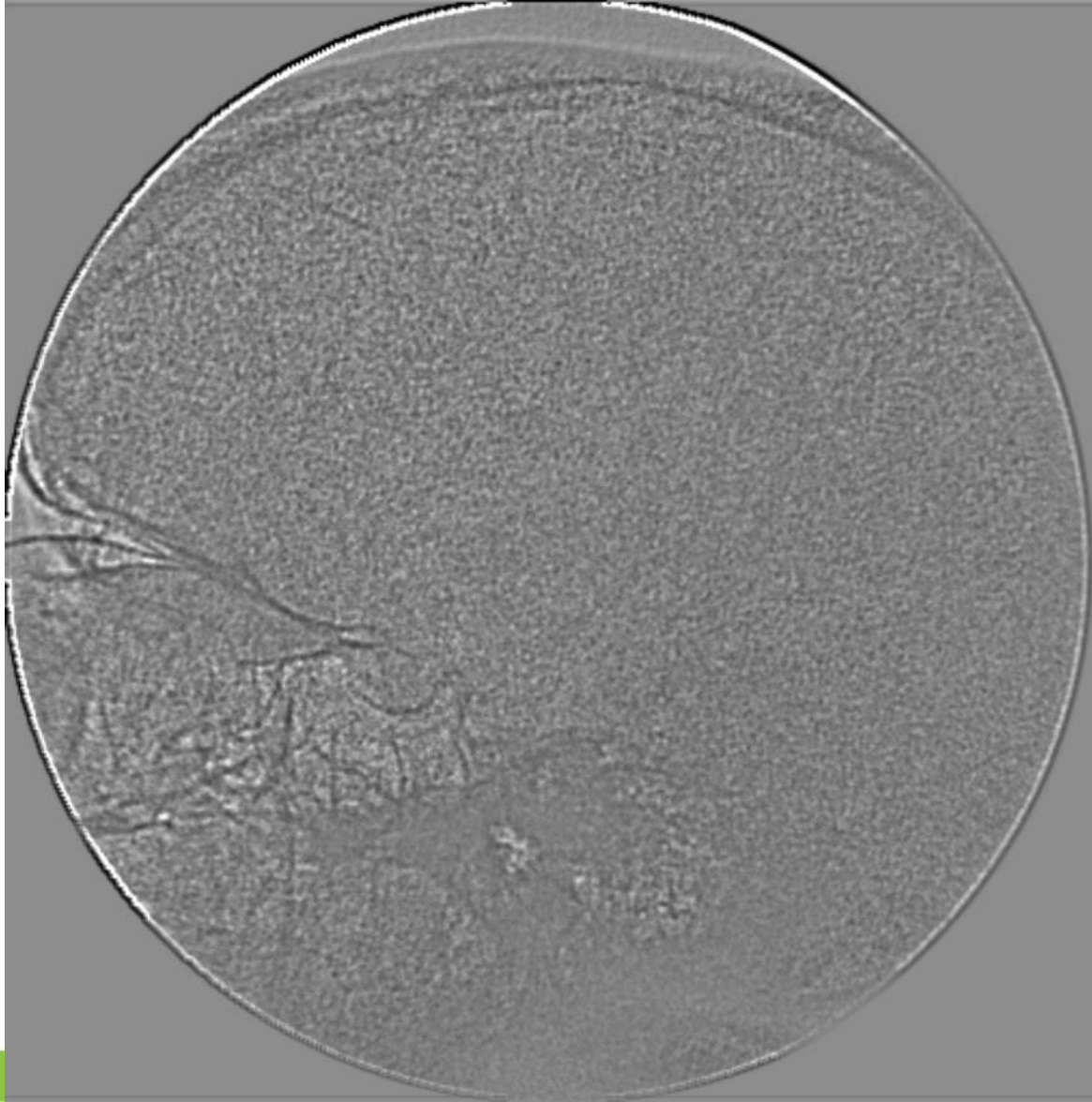


InspireMD

Bilateral Internal Carotid Disease

CGUARD™
Carotid Embolic Prevention System

ICCA
STROKE

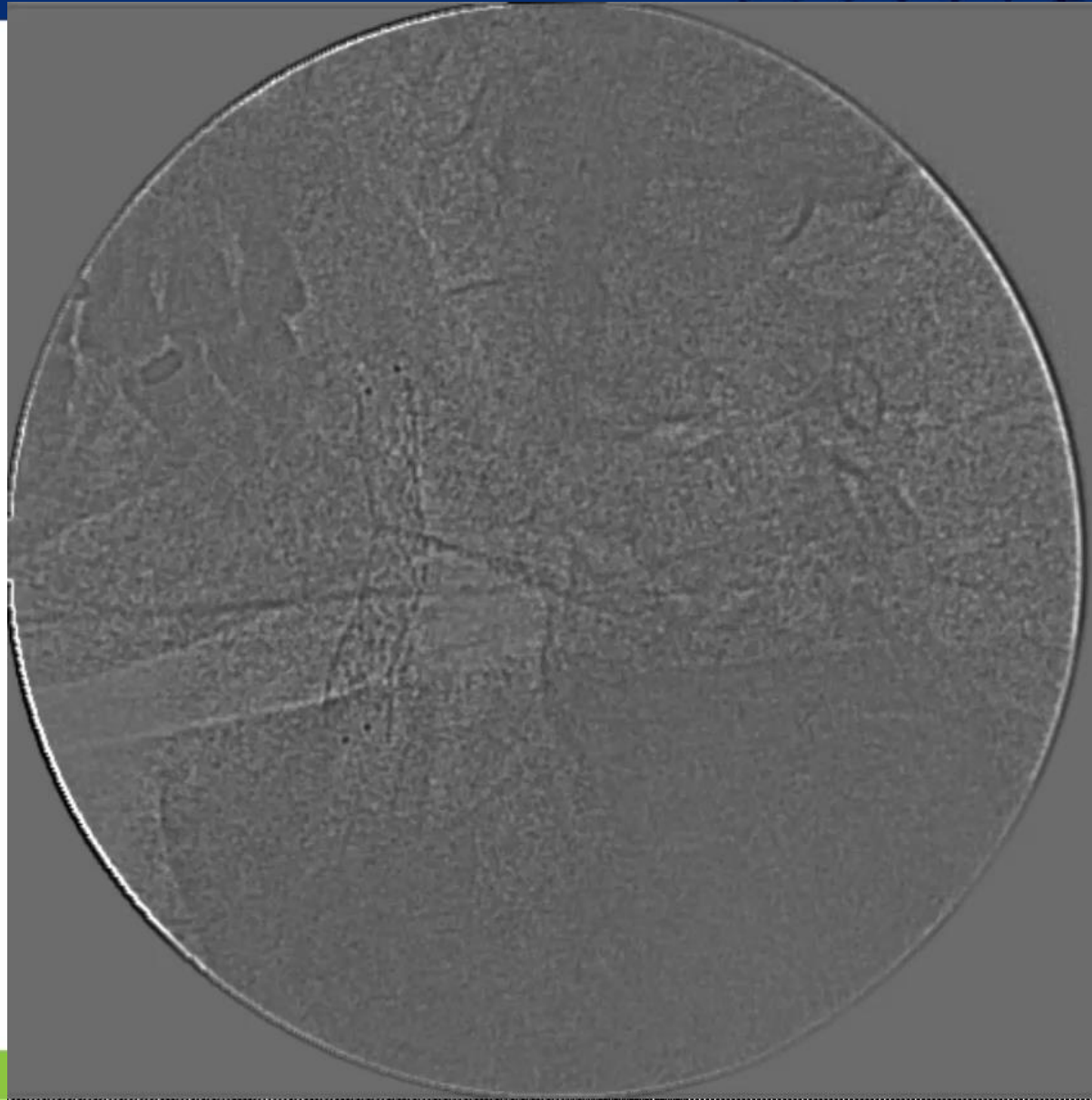


InspireMD

Bilateral Internal Carotid Disease

CGUARD™
Carotid Embolic Prevention System

ICCA
STROKE

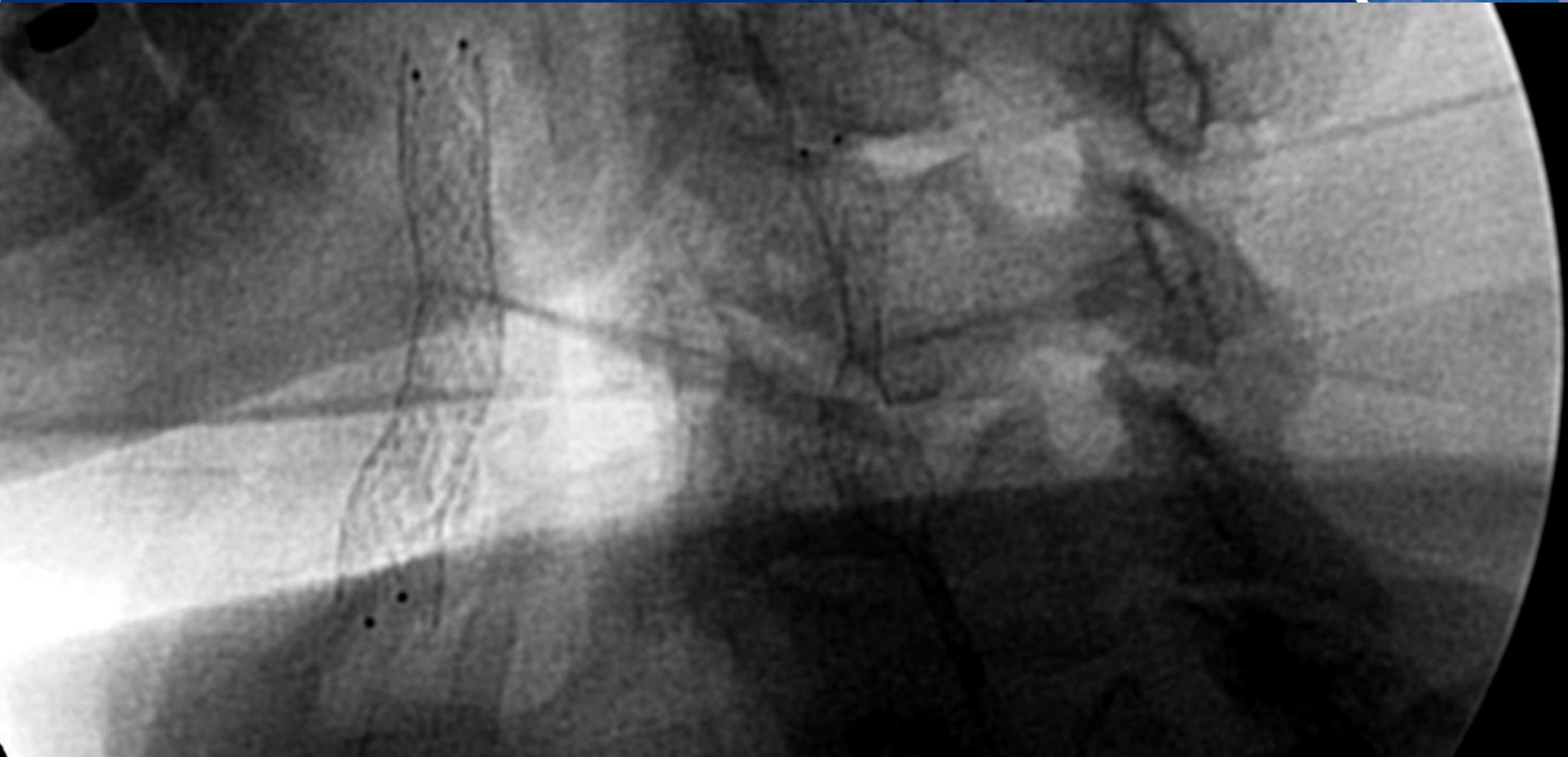


InspireMD

Bilateral Internal Carotid Disease

CGUARD™
Carotid Embolic Prevention System

ICCA
STROKE



Bilateral Internal Carotid Disease

CGUARD™
Carotid Embolic Prevention System

ICCA
STROKE

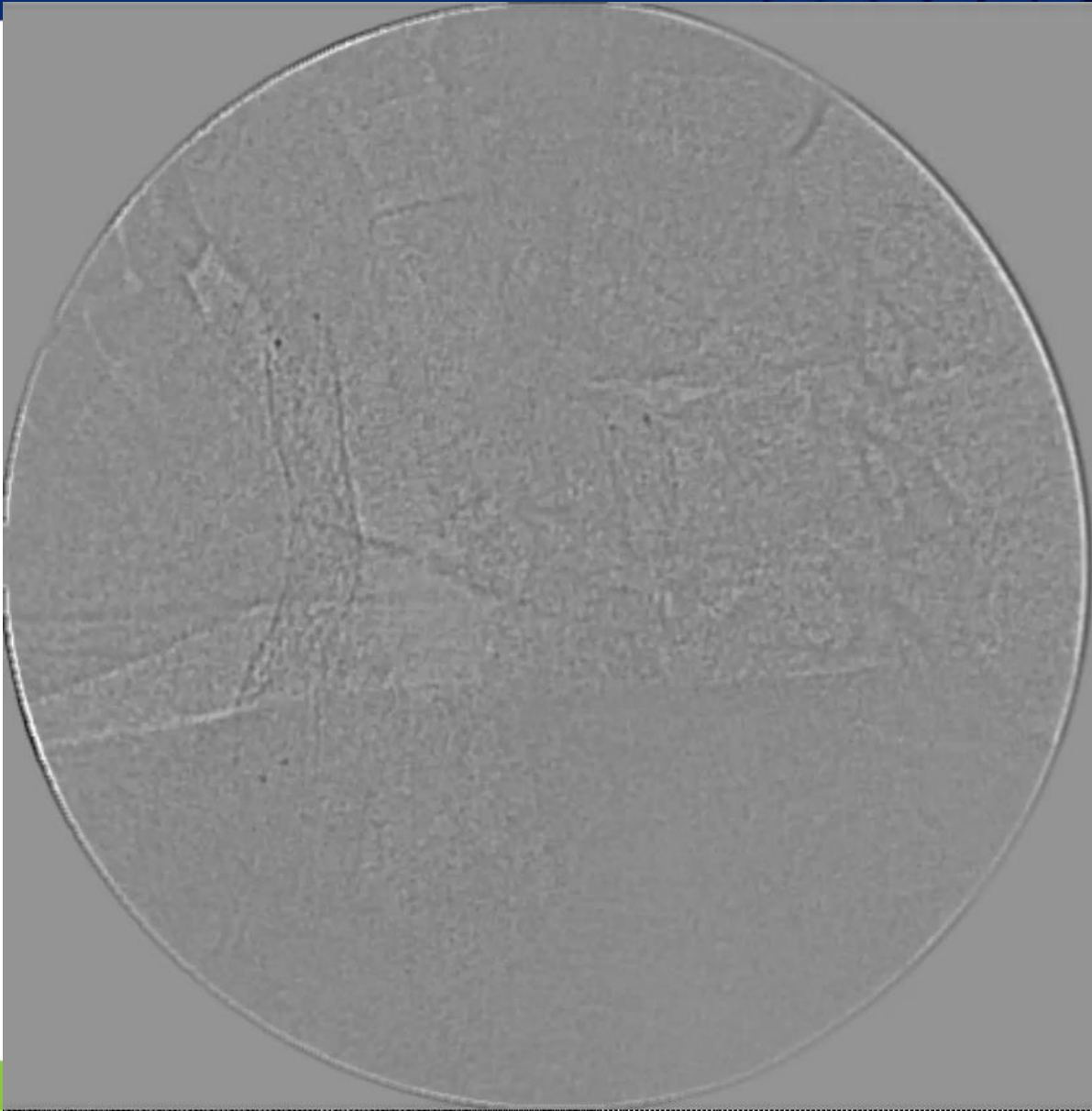


InspireMD

Bilateral Internal Carotid Disease

CGUARD™
Carotid Embolic Prevention System

ICCA
STROKE



InspireMD

Bilateral Internal Carotid Disease

CGUARD™
Carotid Embolic Prevention System

ICCA
STROKE

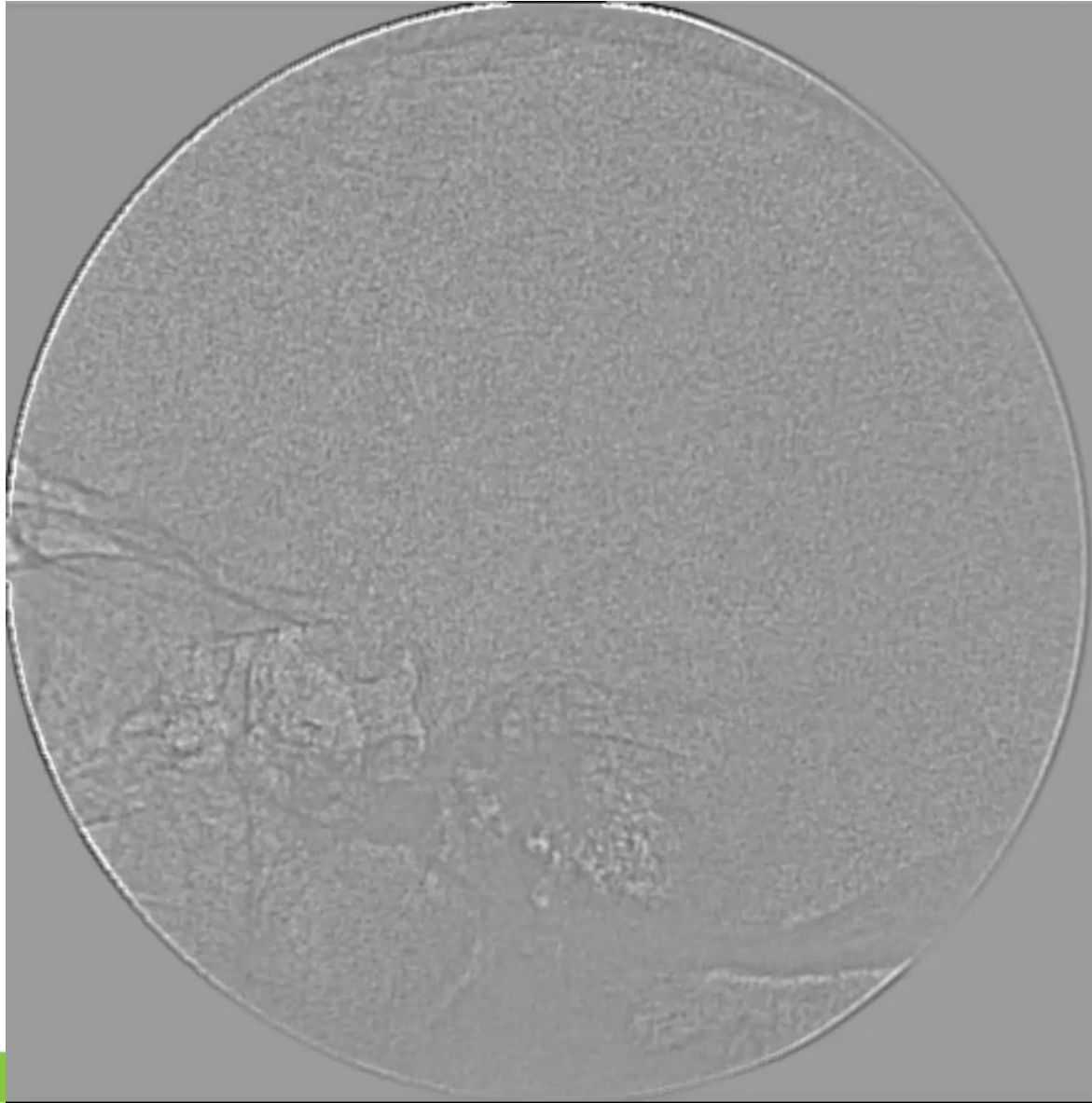


InspireMD

Bilateral Internal Carotid Disease

CGUARD™
Carotid Embolic Prevention System

ICCA
STROKE

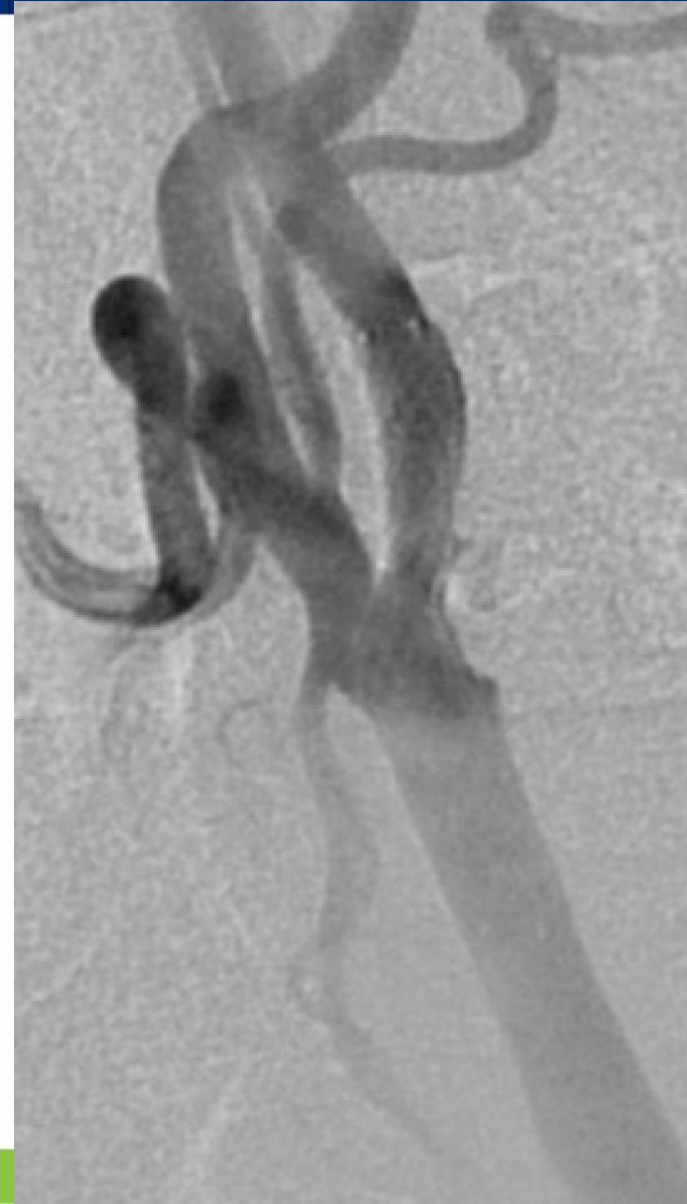
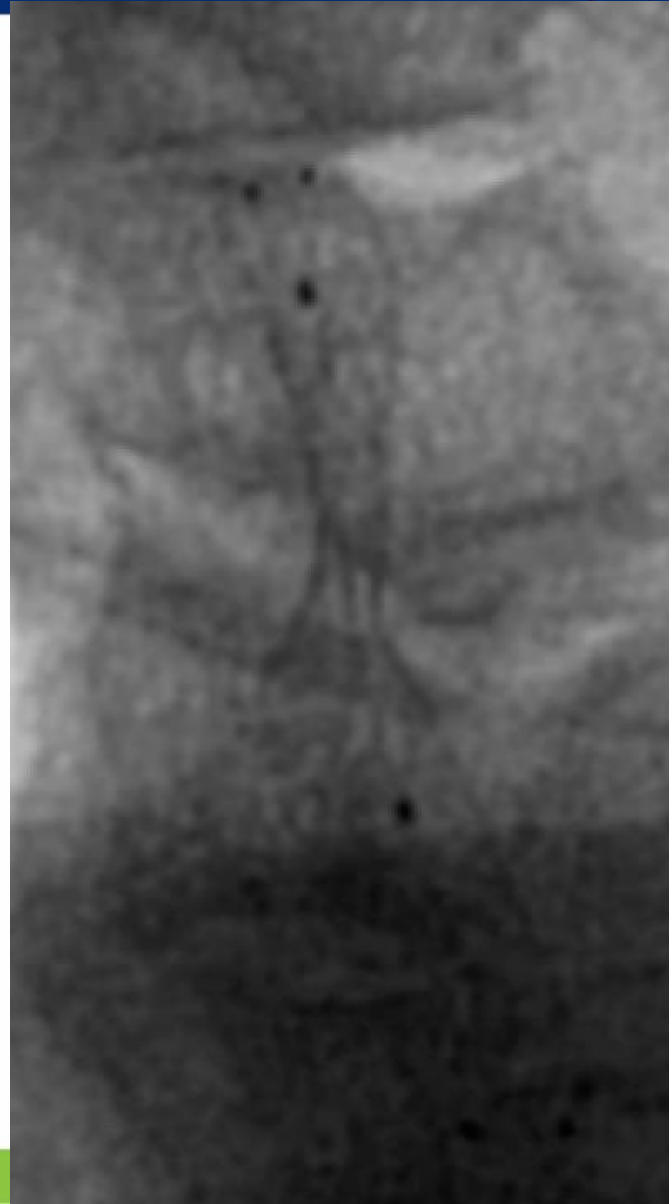


InspireMD

Bilateral Internal Carotid Disease

CGUARD™
Carotid Embolic Prevention System

ICCA
STROKE



InspireMD

CT Follow up (8 month)

CGUARD™
Carotid Embolic Prevention System

ICCA
STROKE

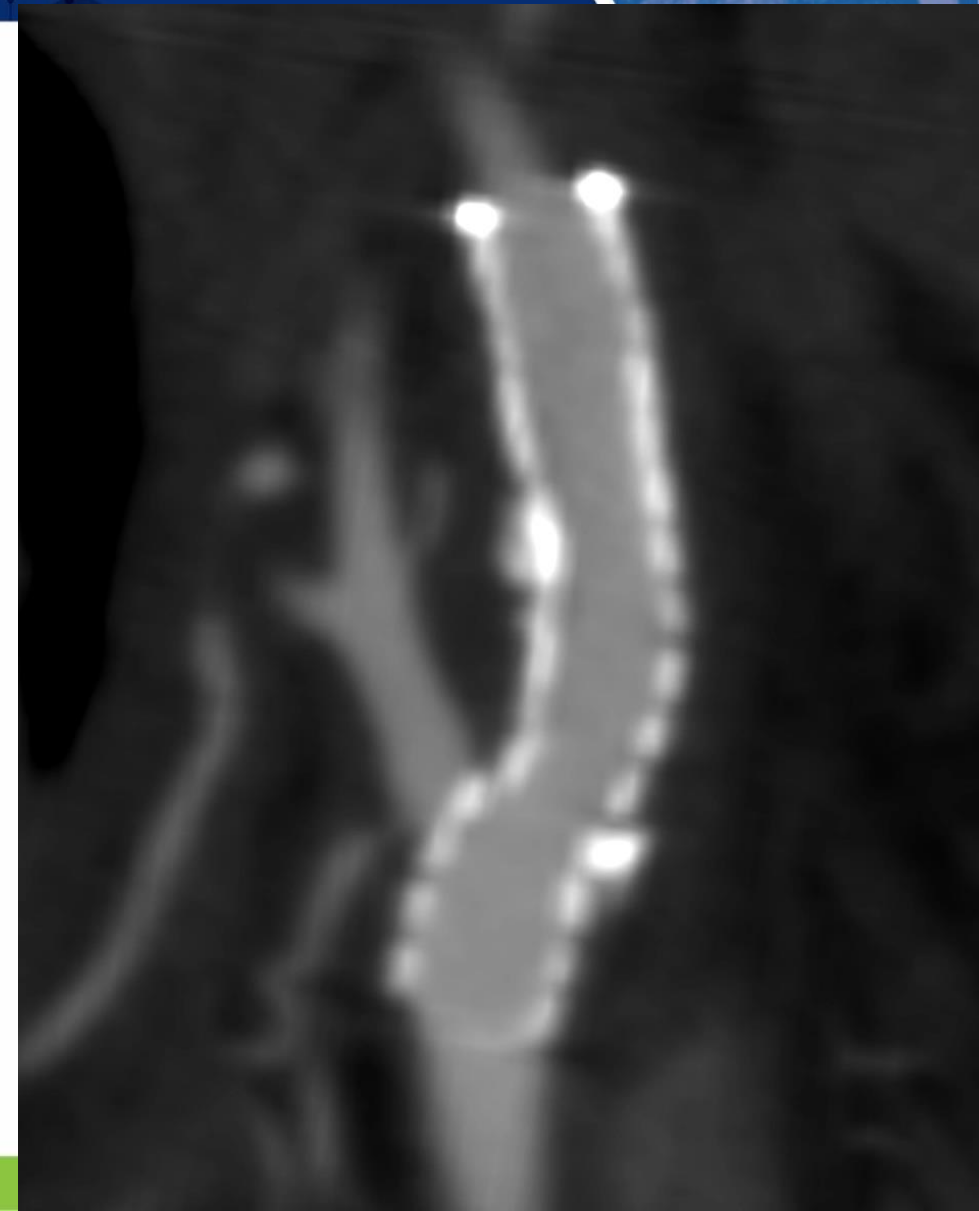
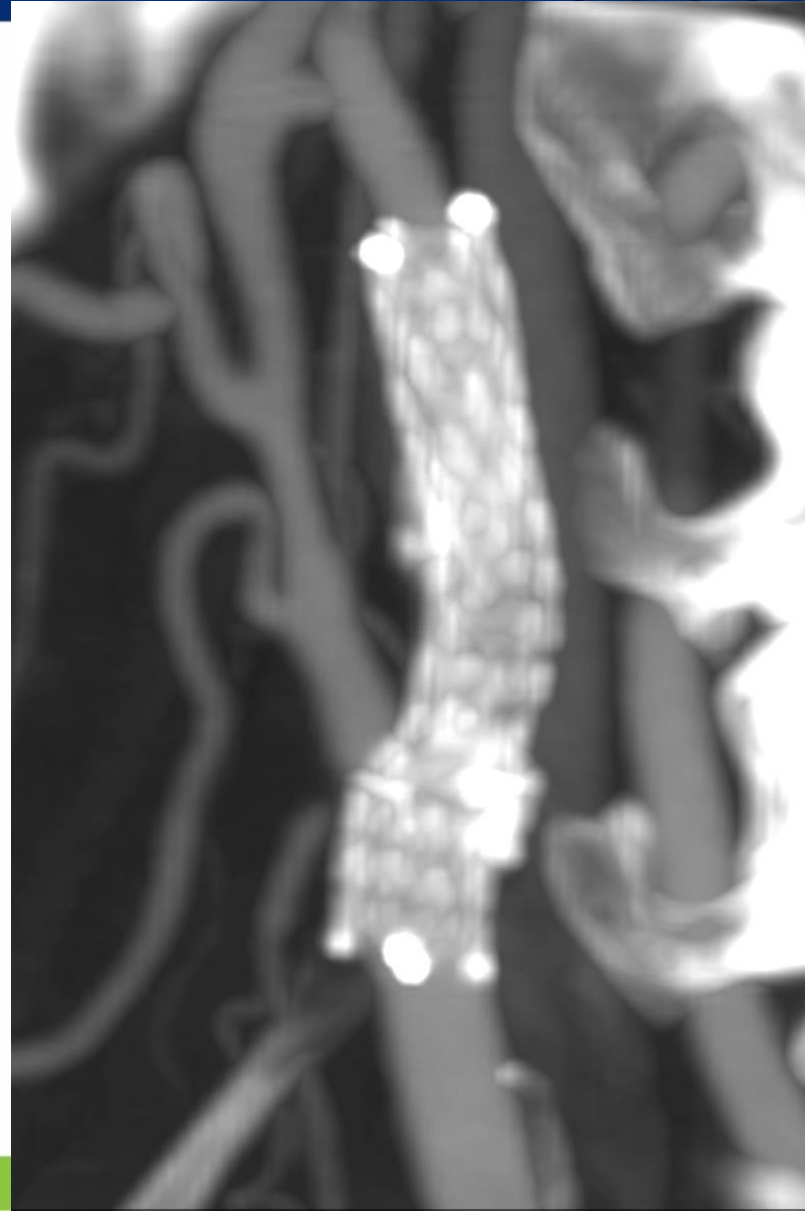
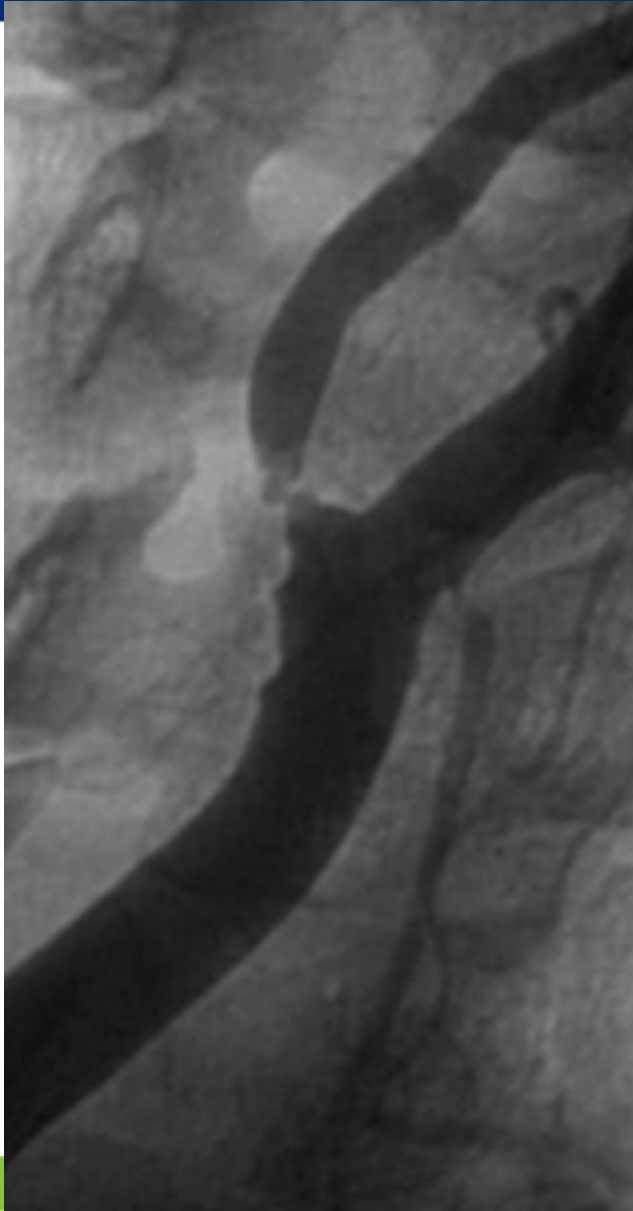


InspireMD

CT Follow up (8 month)

CGUARD™
Carotid Embolic Prevention System

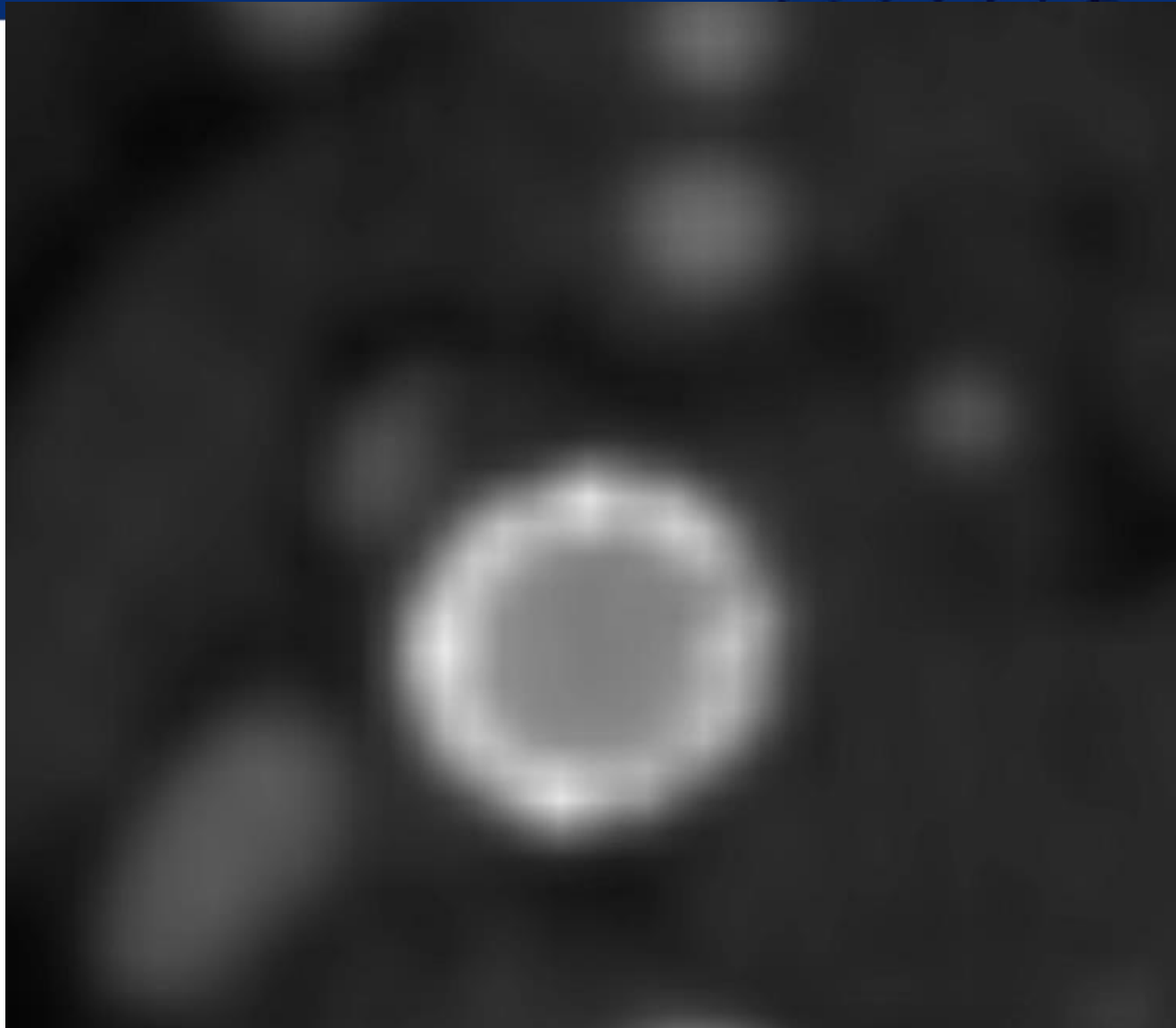
ICCA
STROKE



CT Follow up (8 month)

CGUARD™
Carotid Embolic Prevention System

ICCA
STROKE

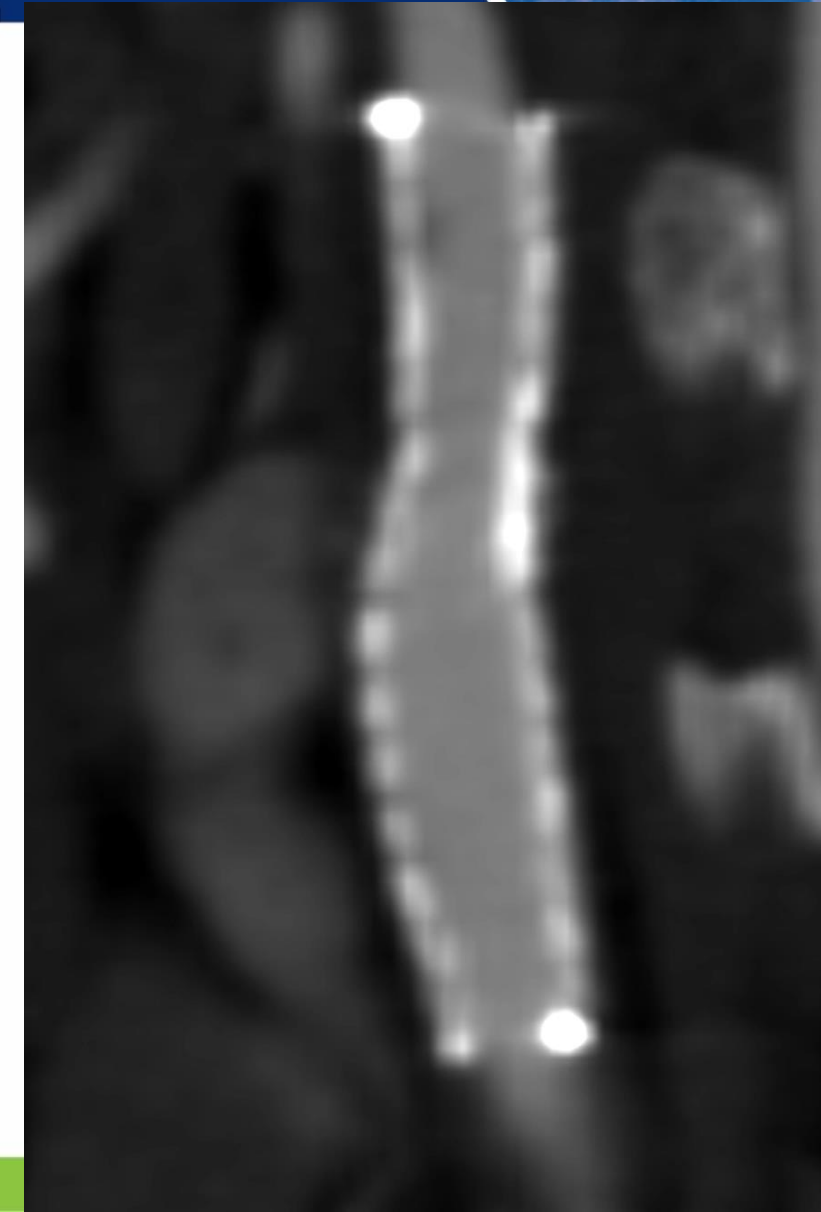
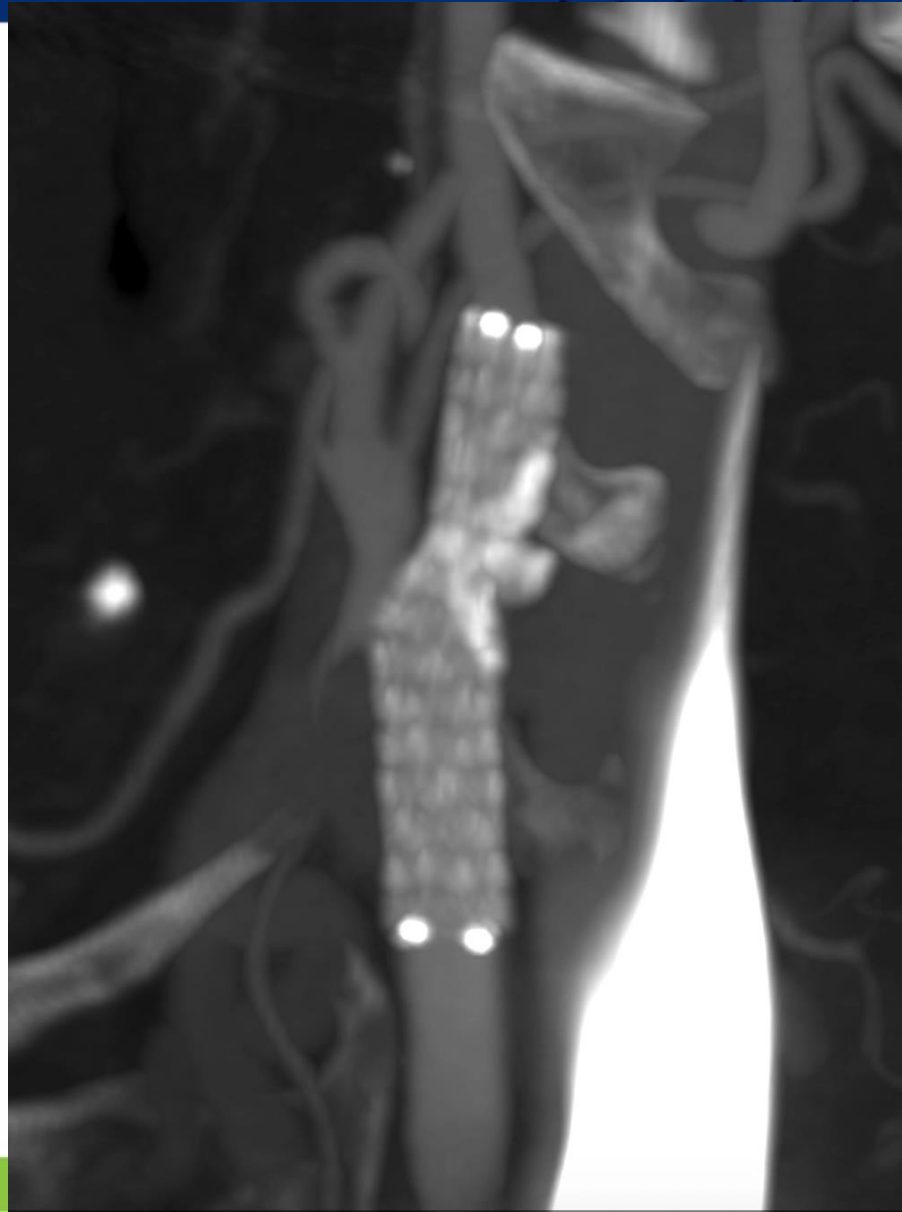
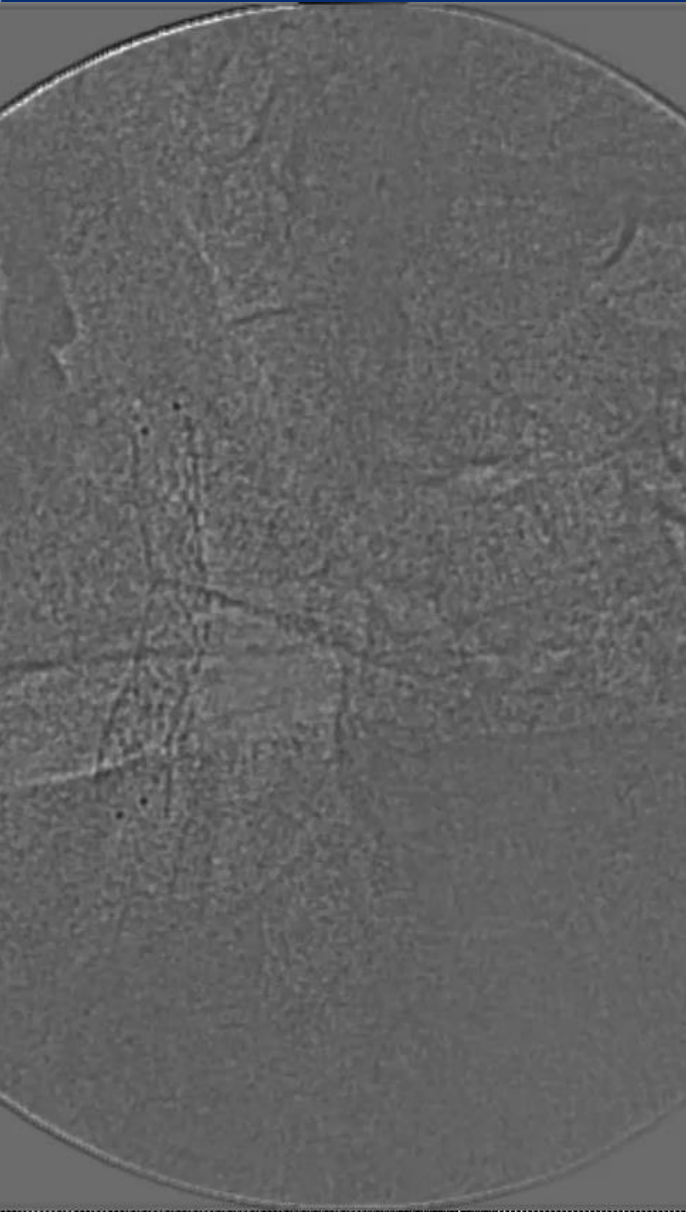


InspireMD

CT Follow up (8 month)

CGUARD™
Carotid Embolic Prevention System

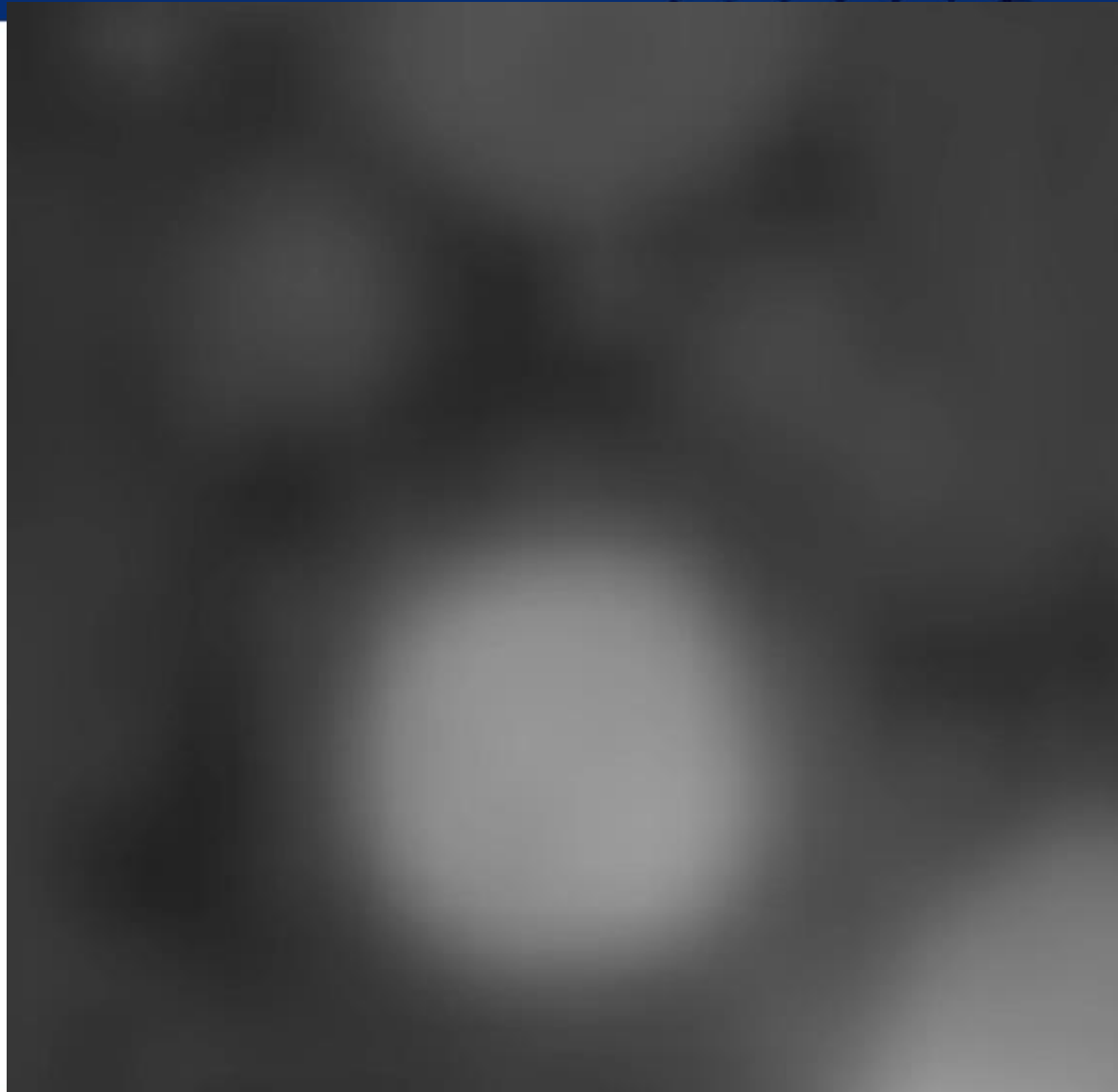
ICCA
STROKE



CT Follow up (8 month)

CGUARD™
Carotid Embolic Prevention System

ICCA
STROKE



InspireMD

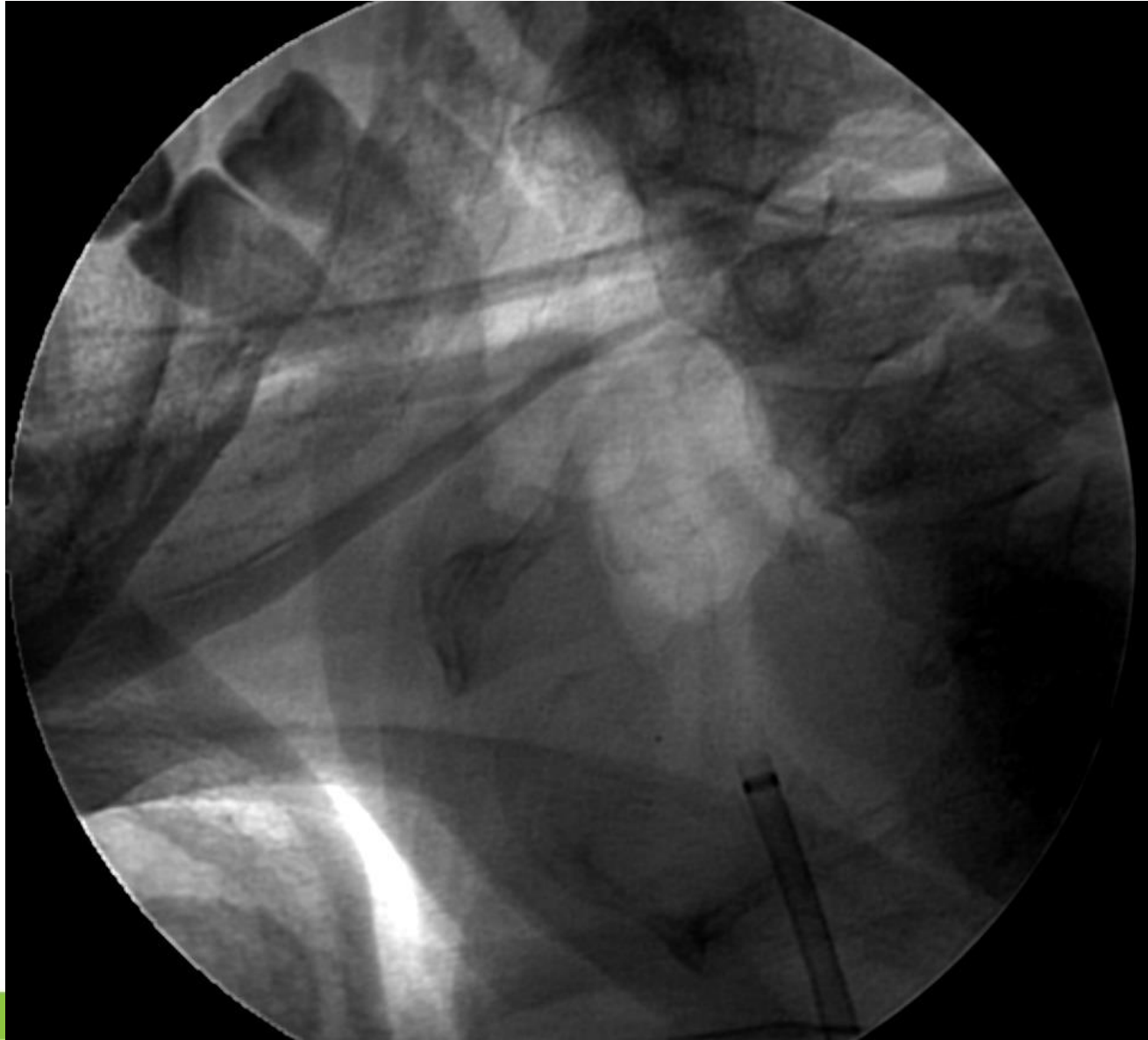
- 58 male, Hipertension, Diabetis type II.
- 26/4/2017 had a rigth ischemic stroke with facio-brachio-crural hemiparesis sequel.
- Echo: 99 % Severe stenosis of rleft internal carotid artery.
- Normal renal function.

Left Ischemic Stroke



CGUARD™
Carotid Embolic Prevention System

ICCA
STROKE

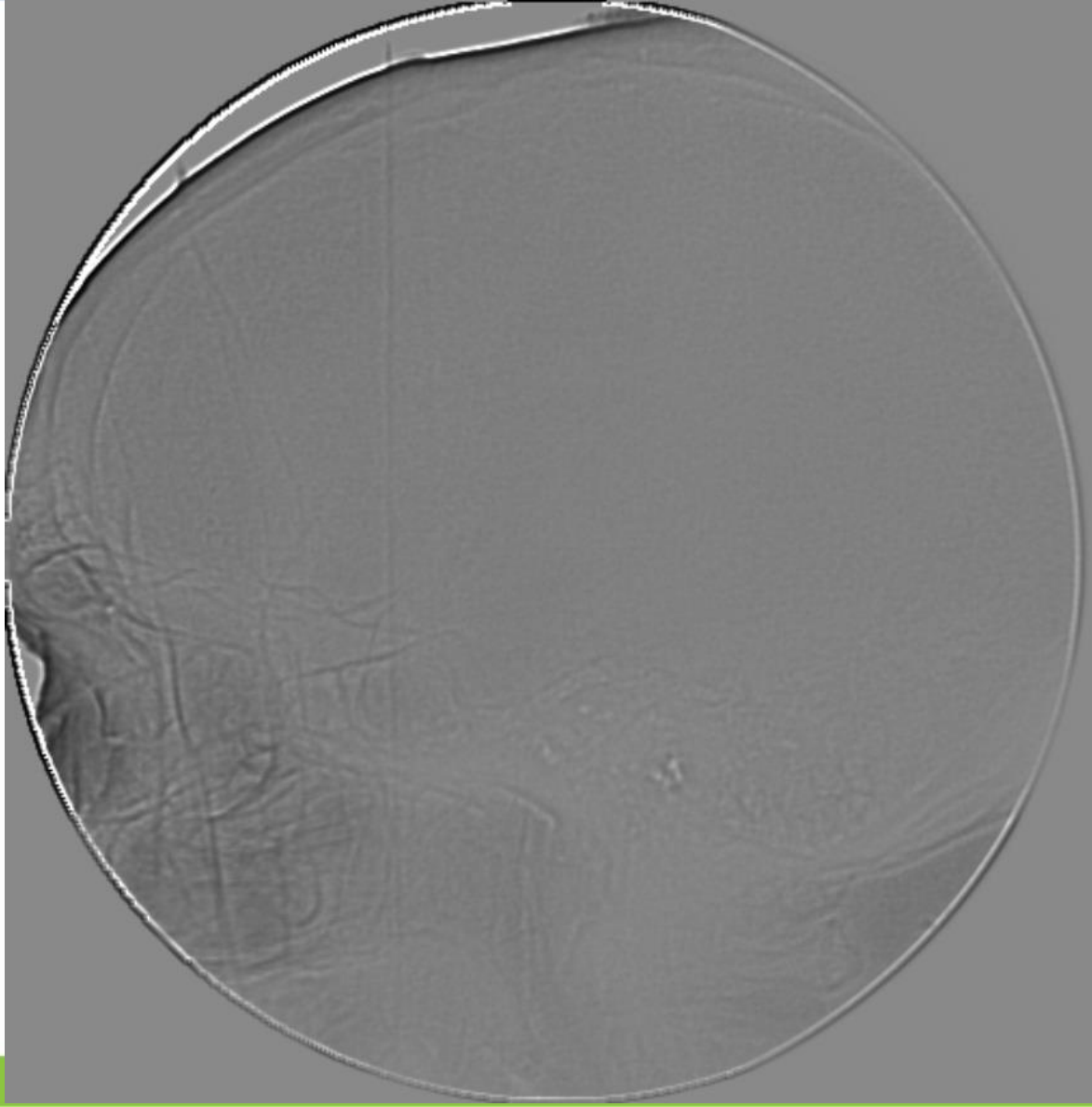


InspireMD

Left Ischemic Stroke

CGUARD™
Carotid Embolic Prevention System

ICCA
STROKE



InspireMD

Left Ischemic Stroke

CGUARD™
Carotid Embolic Prevention System

ICCA
STROKE

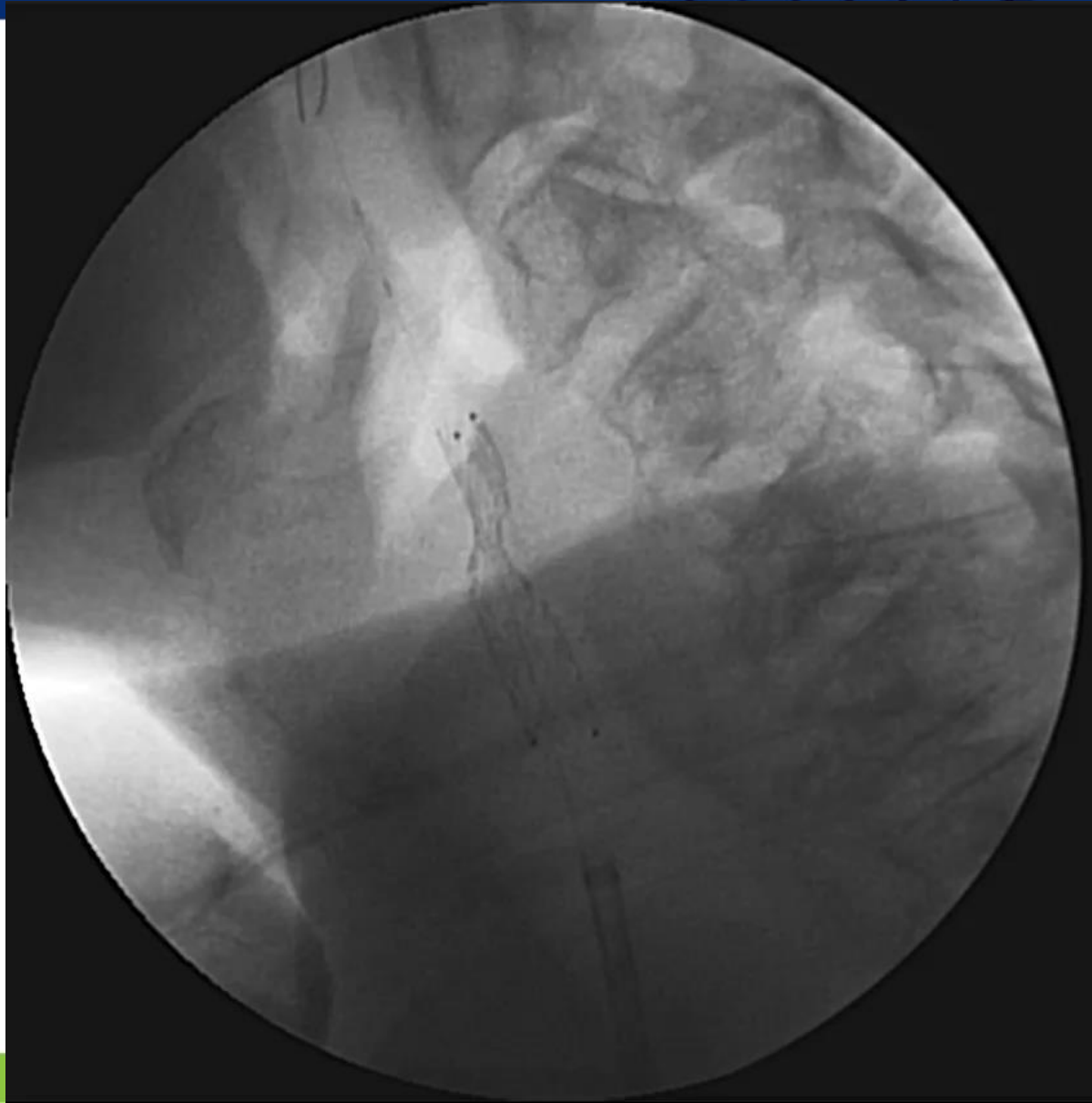


InspireMD

Left Ischemic Stroke

CGUARD™
Carotid Embolic Prevention System

ICCA
STROKE



InspireMD

Left Ischemic Stroke

CGUARD™
Carotid Embolic Prevention System

ICCA
STROKE

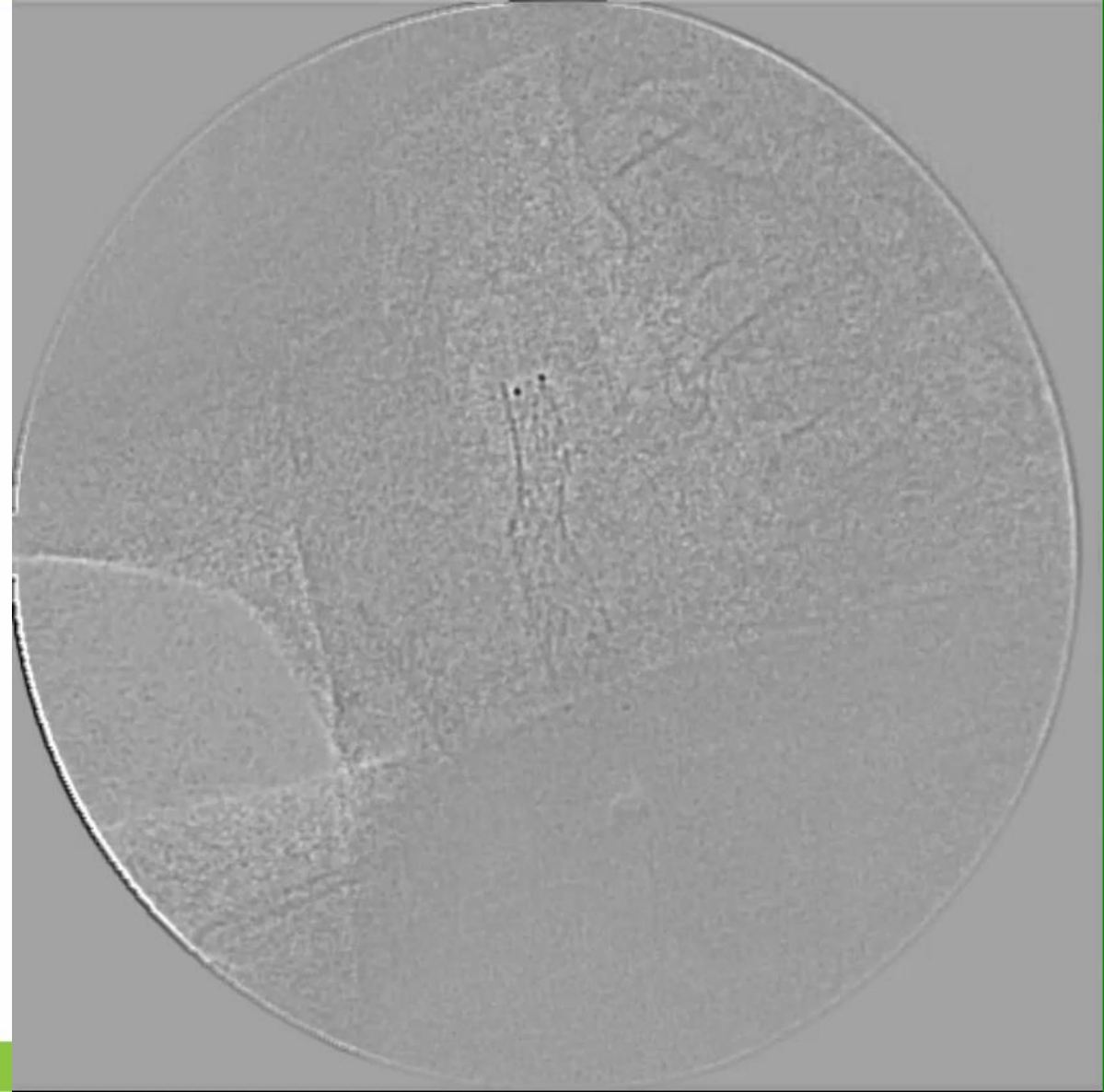


InspireMD

Left Ischemic Stroke

CGUARD™
Carotid Embolic Prevention System

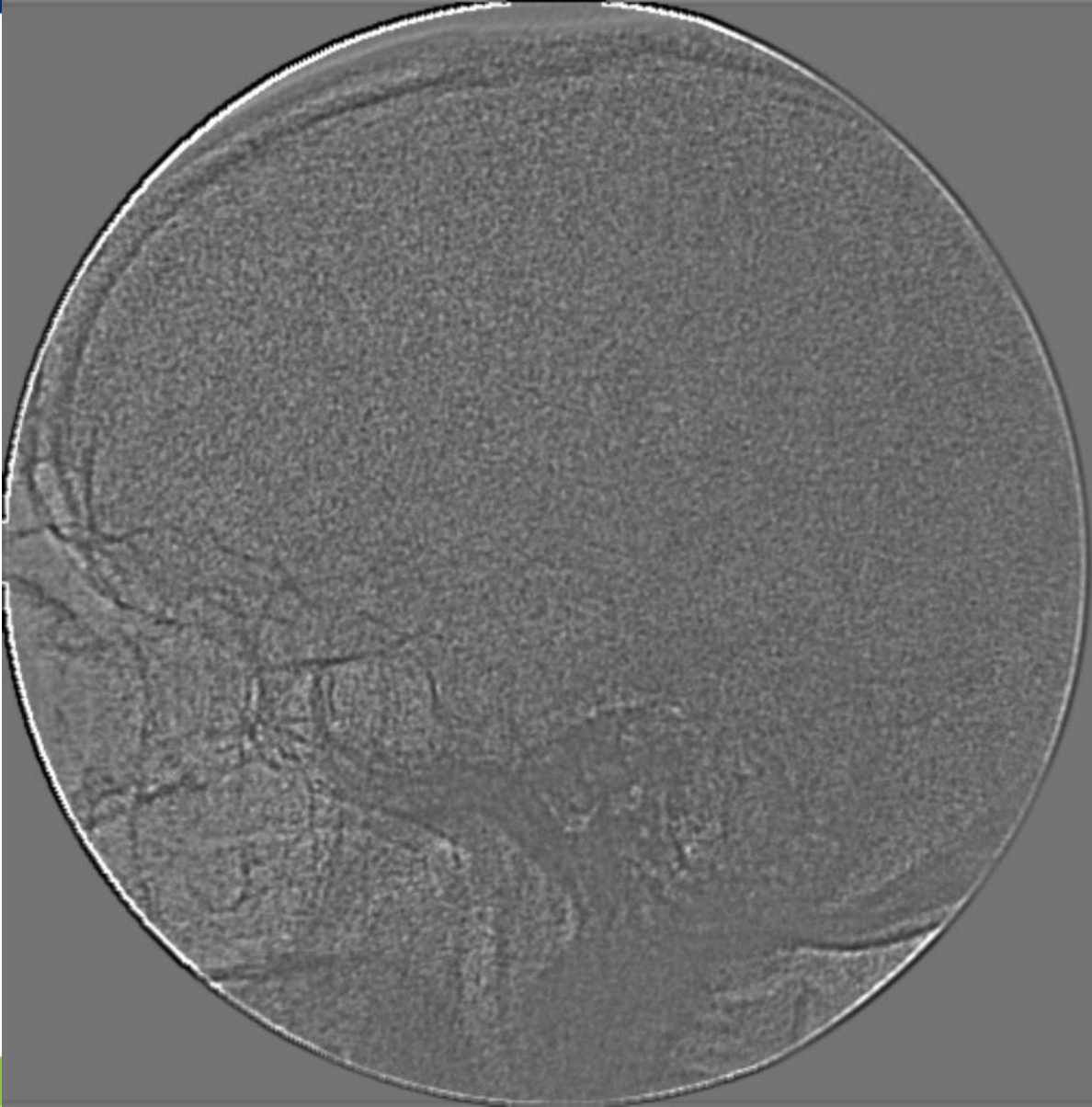
ICCA
STROKE



Left Ischemic Stroke

CGUARD™
Carotid Embolic Prevention System

ICCA
STROKE



InspireMD

Clinical Case III

CGUARD™
Carotid Embolic Prevention System

ICCA
STROKE

- 67 male, Hipertension.
- Esophageal cancer.
- Echo: 90% asymptomatic ulcerated stenosis of right internal carotid artery.
- Normal renal function.

Post-ICCA VARSAW Strategy

CGUARD™
Carotid Embolic Prevention System

ICCA
STROKE



InspireMD

Post-ICCA VARSAW Strategy

CGUARD™
Carotid Embolic Prevention System

ICCA
STROKE

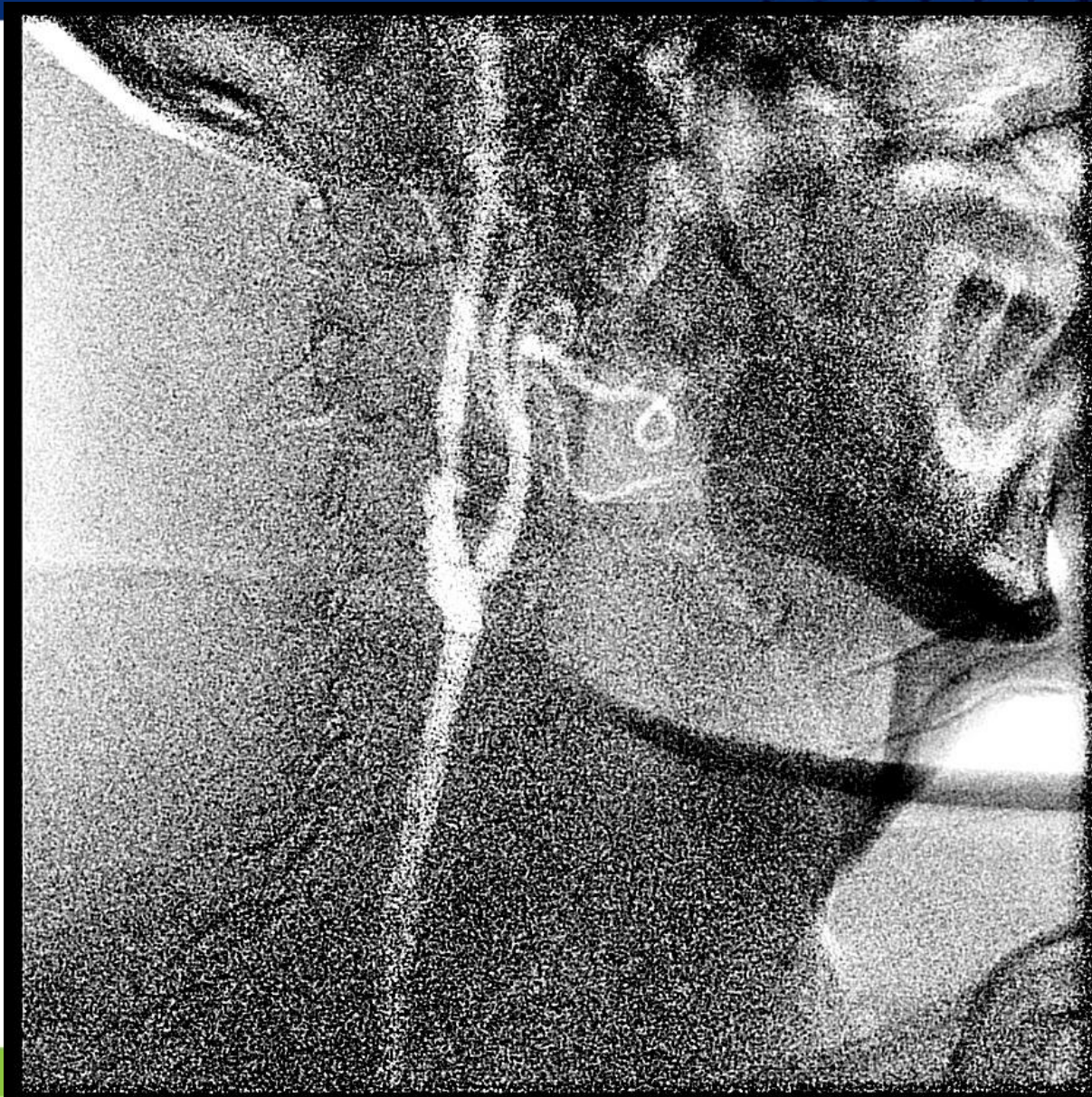


InspireMD

Post-ICCA VARSAW Strategy

CGUARD™
Carotid Embolic Prevention System

ICCA
STROKE



InspireMD

Post-ICCA VARSAW Strategy

CGUARD™
Carotid Embolic Prevention System

ICCA
STROKE

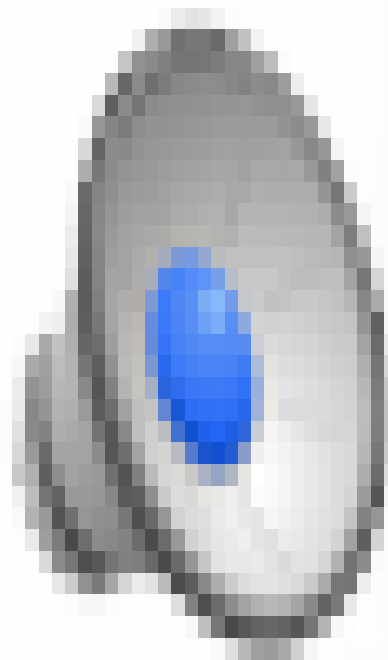


InspireMD

Post-ICCA VARSAW Strategy

CGUARD™
Carotid Embolic Prevention System

ICCA
STROKE



InspireMD

Post-ICCA VARSAW Strategy

CGUARD™
Carotid Embolic Prevention System

ICCA
STROKE



InspireMD

Post-ICCA VARSAW Strategy

CGUARD™
Carotid Embolic Prevention System

ICCA
STROKE



InspireMD

Clinical Case IV

CGUARD™
Carotid Embolic Prevention System

ICCA
STROKE

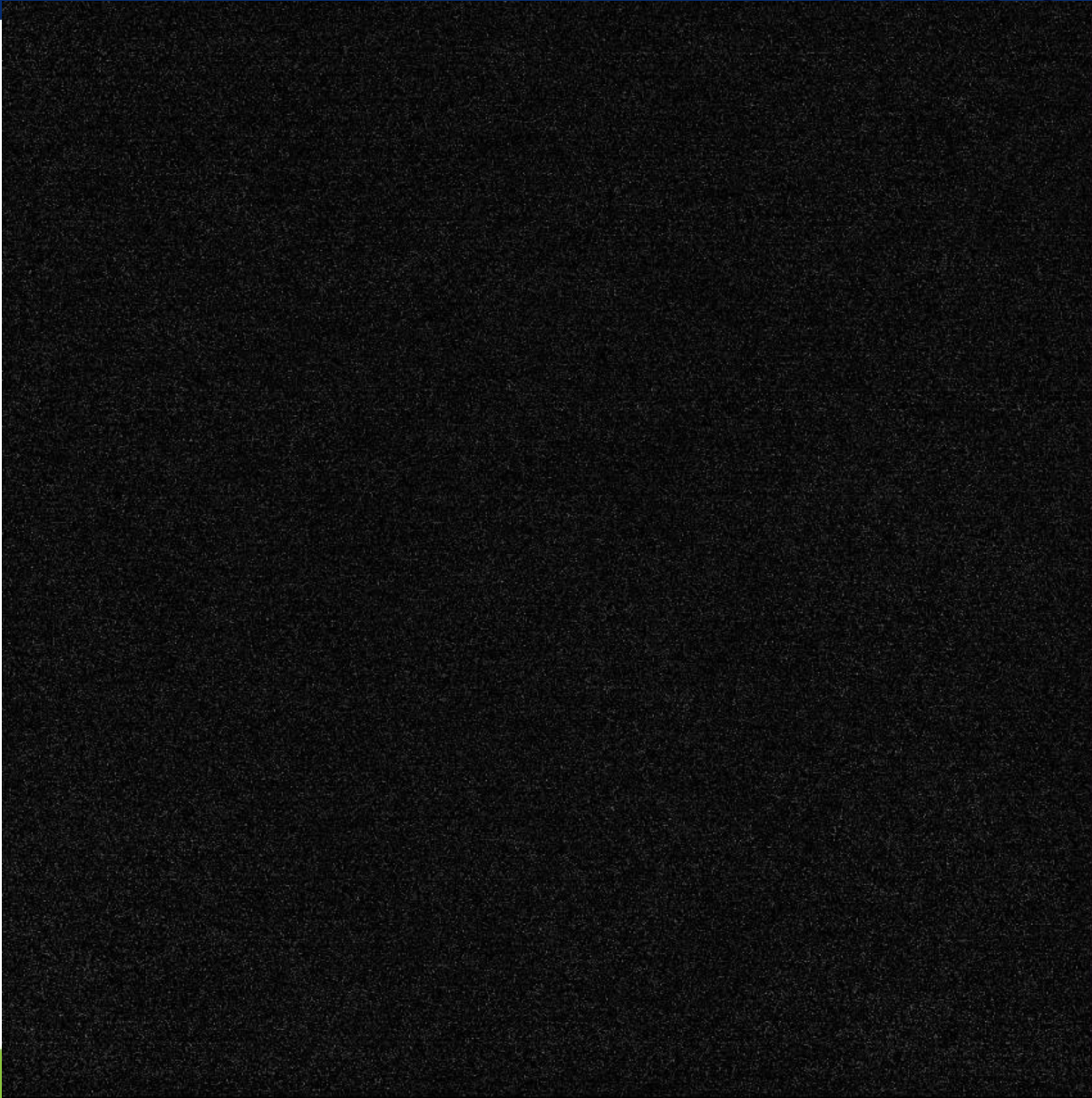
- 77 male, Hipertension, Diabetes type II.
- Two episodes Right transient ischemic attack.
- Echo: 60% left ulcerated stenosis of internal carotid artery.
- Normal renal function.

InspireMD

Be Carefull With The Size !!!!

CGUARD™
Carotid Embolic Prevention System

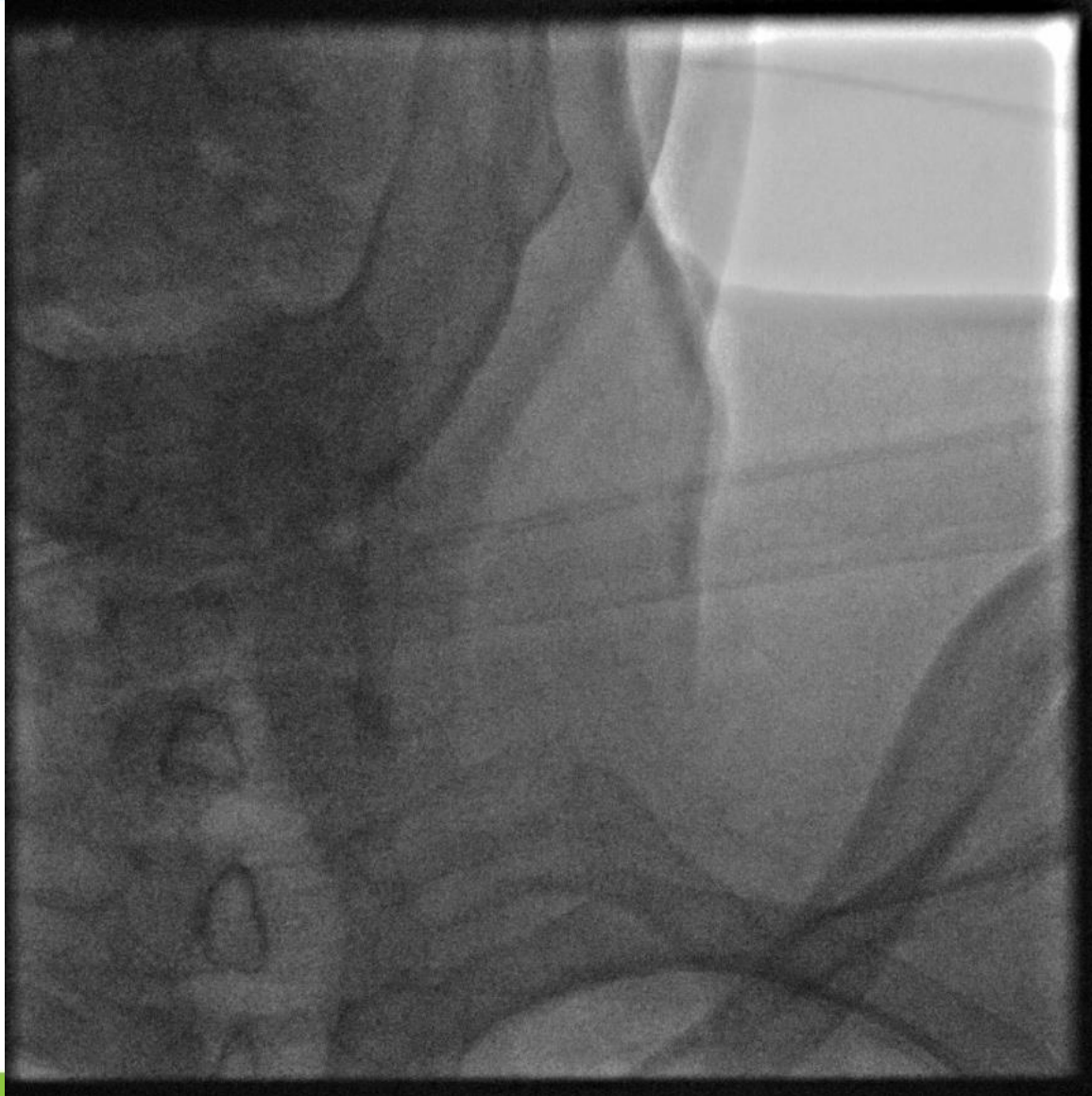
ICCA
STROKE



Be Carefull With The Size !!!!

CGUARD™
Carotid Embolic Prevention System

ICCA
STROKE



InspireMD

Be Carefull With The Size !!!!

CGUARD™
Carotid Embolic Prevention System

ICCA
STROKE



InspireMD

Be Careful With The Size !!!!

CGUARD™
Carotid Embolic Prevention System

ICCA
STROKE

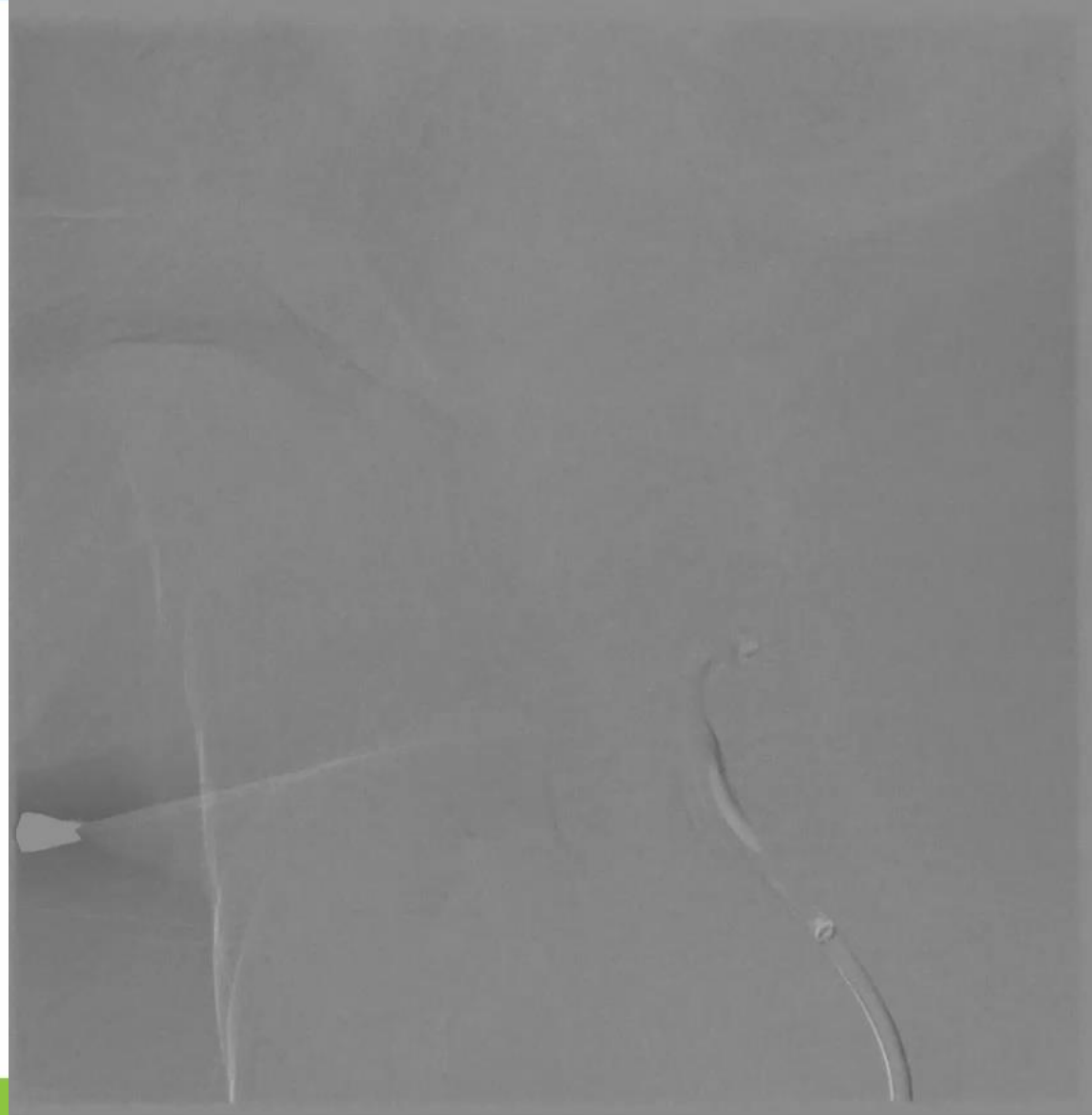


InspireMD

Be Carefull With The Size !!!!

CGUARD™
Carotid Embolic Prevention System

ICCA
STROKE

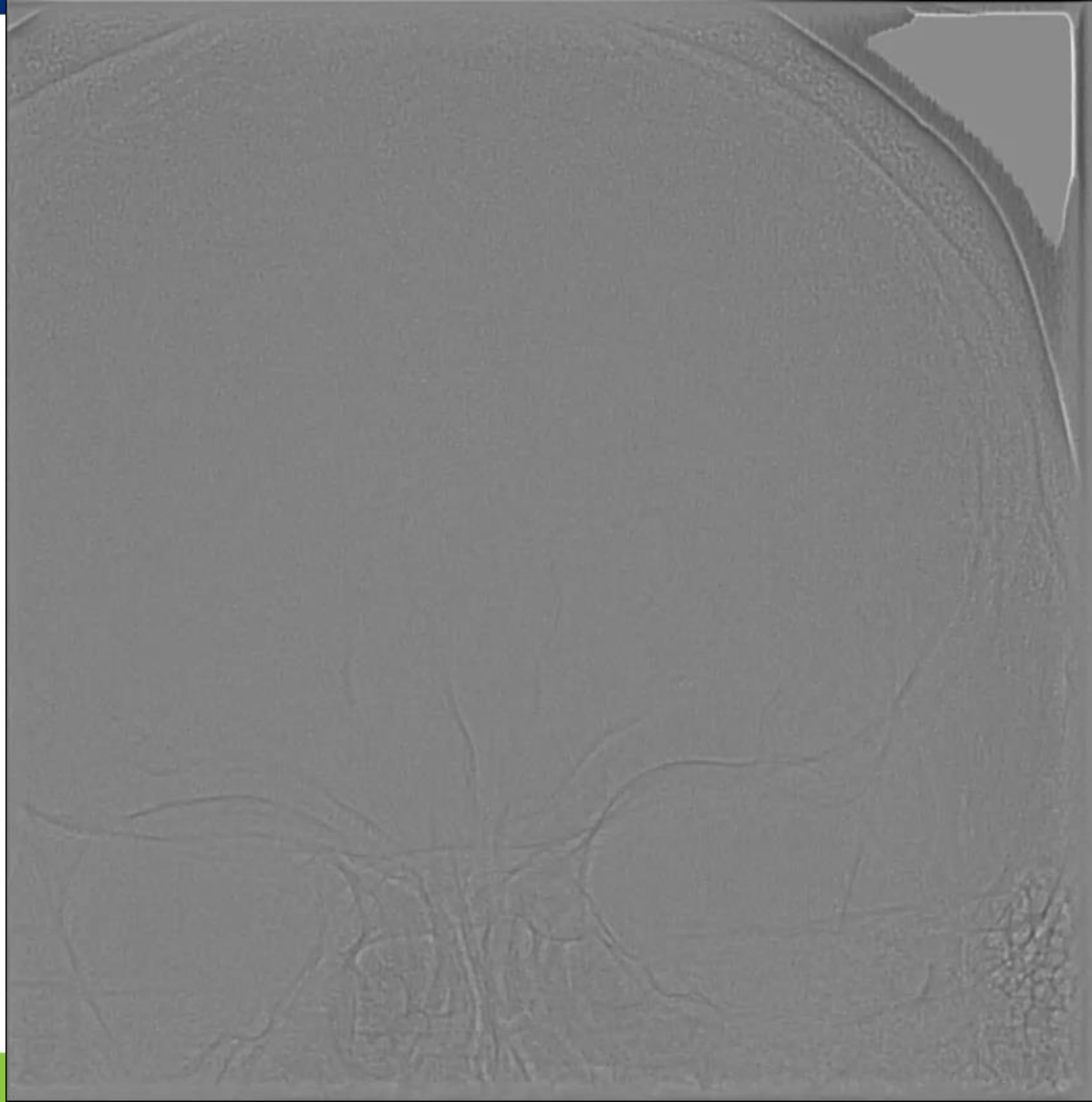


InspireMD

Be Careful With The Size !!!!

CGUARD™
Carotid Embolic Prevention System

ICCA
STROKE

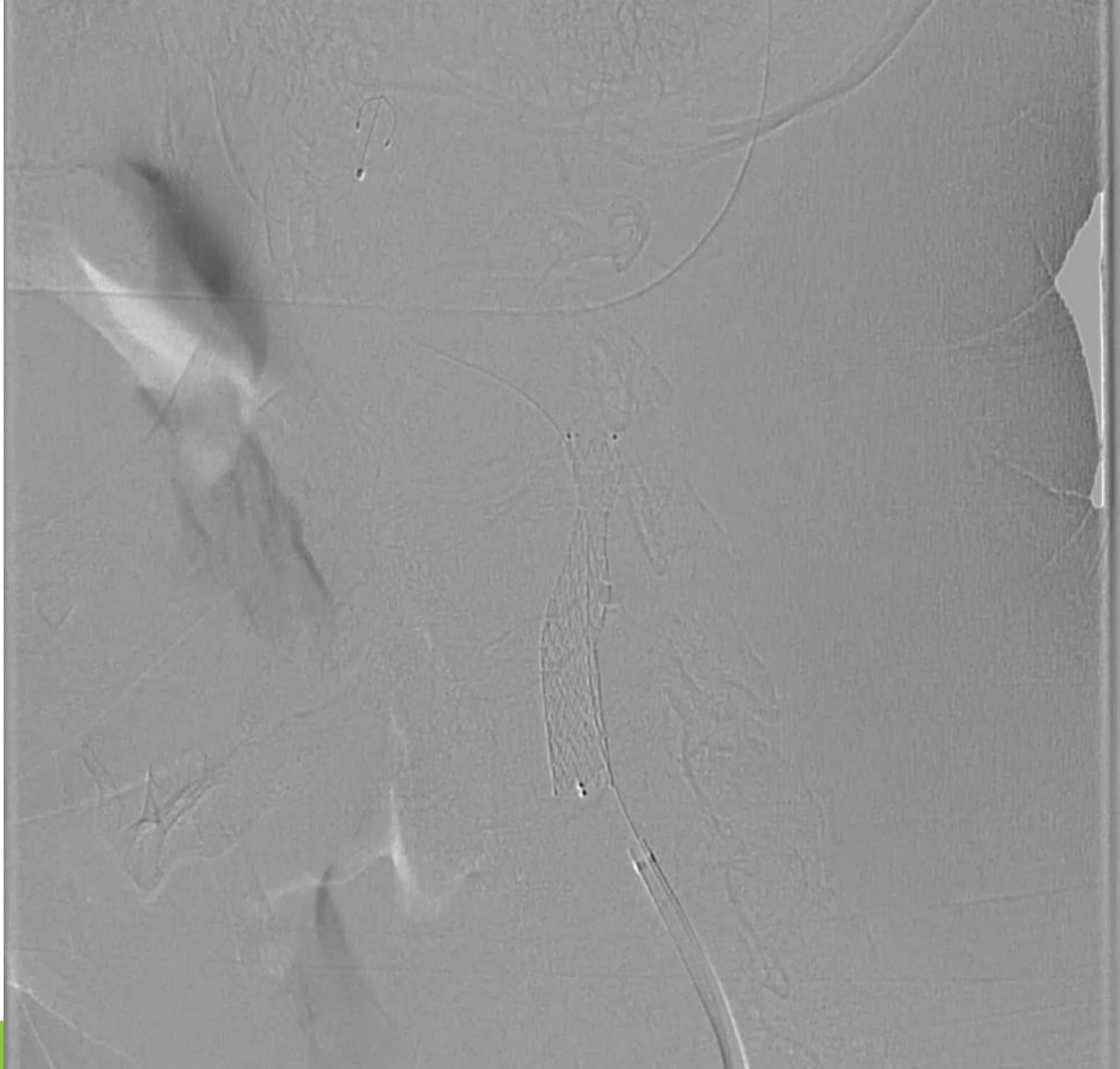


InspireMD

Be Careful With The Size !!!!

CGUARD™
Carotid Embolic Prevention System

ICCA
STROKE



InspireMD

Be Careful With The Size !!!!

CGUARD™
Carotid Embolic Prevention System

ICCA
STROKE

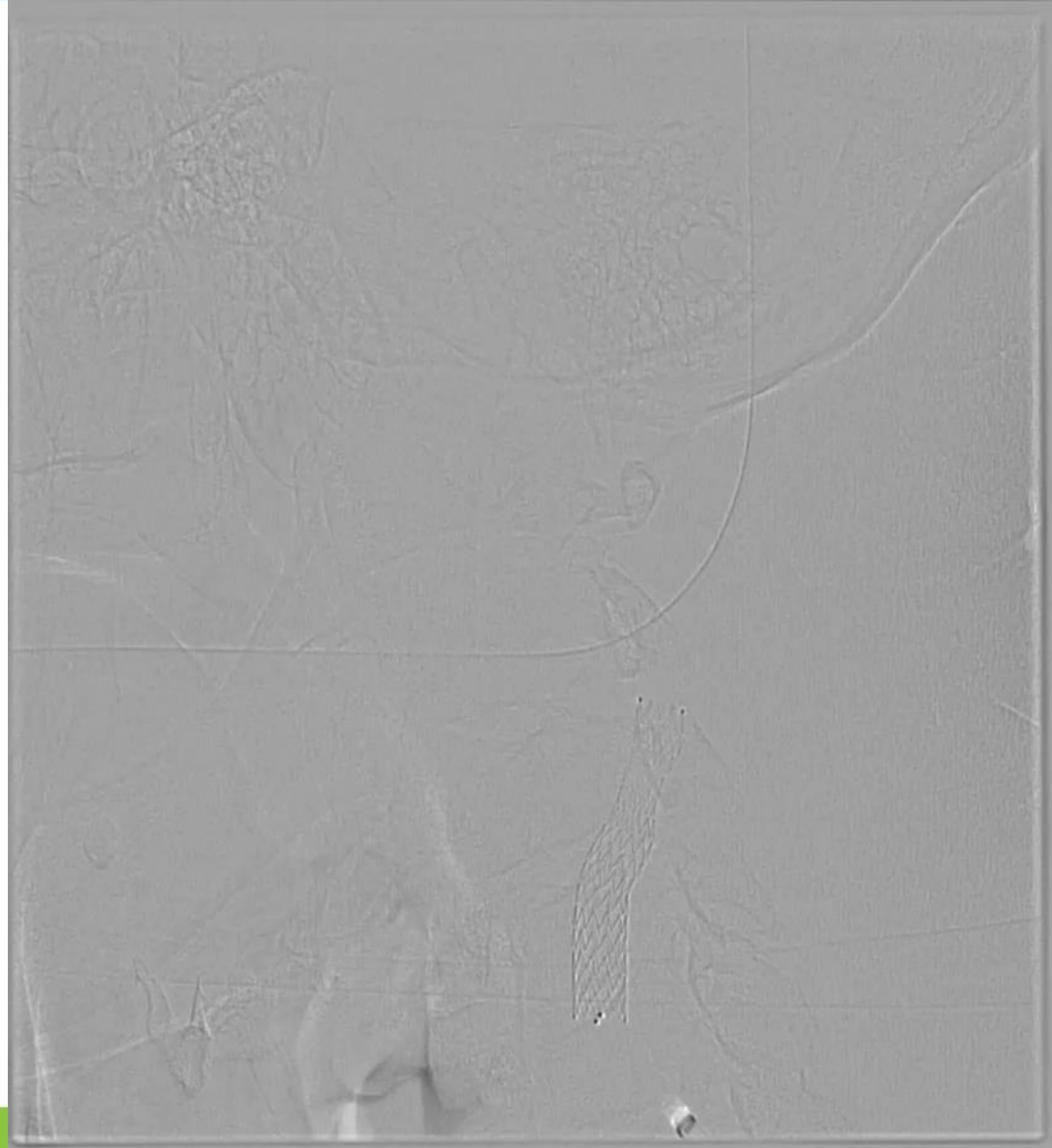


InspireMD

Be Carefull With The Size !!!!

CGUARD™
Carotid Embolic Prevention System

ICCA
STROKE

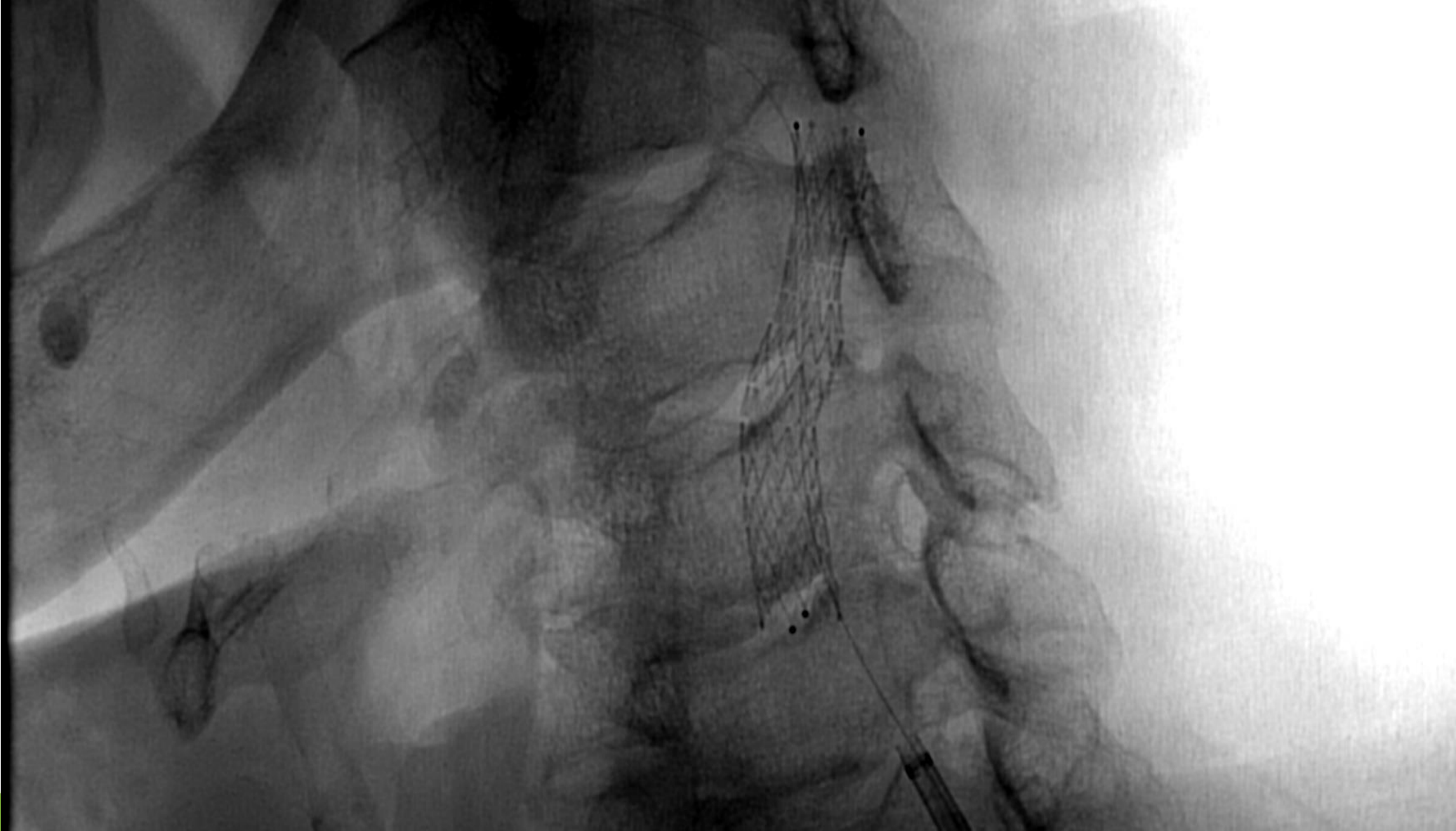


InspireMD

Be Carefull With The Size !!!!

CGUARD™
Carotid Embolic Prevention System

ICCA
STROKE



InspireMD



Be Careful With The Size !!!!

CGUARD™
Carotid Embolic Prevention System

ICCA
STROKE

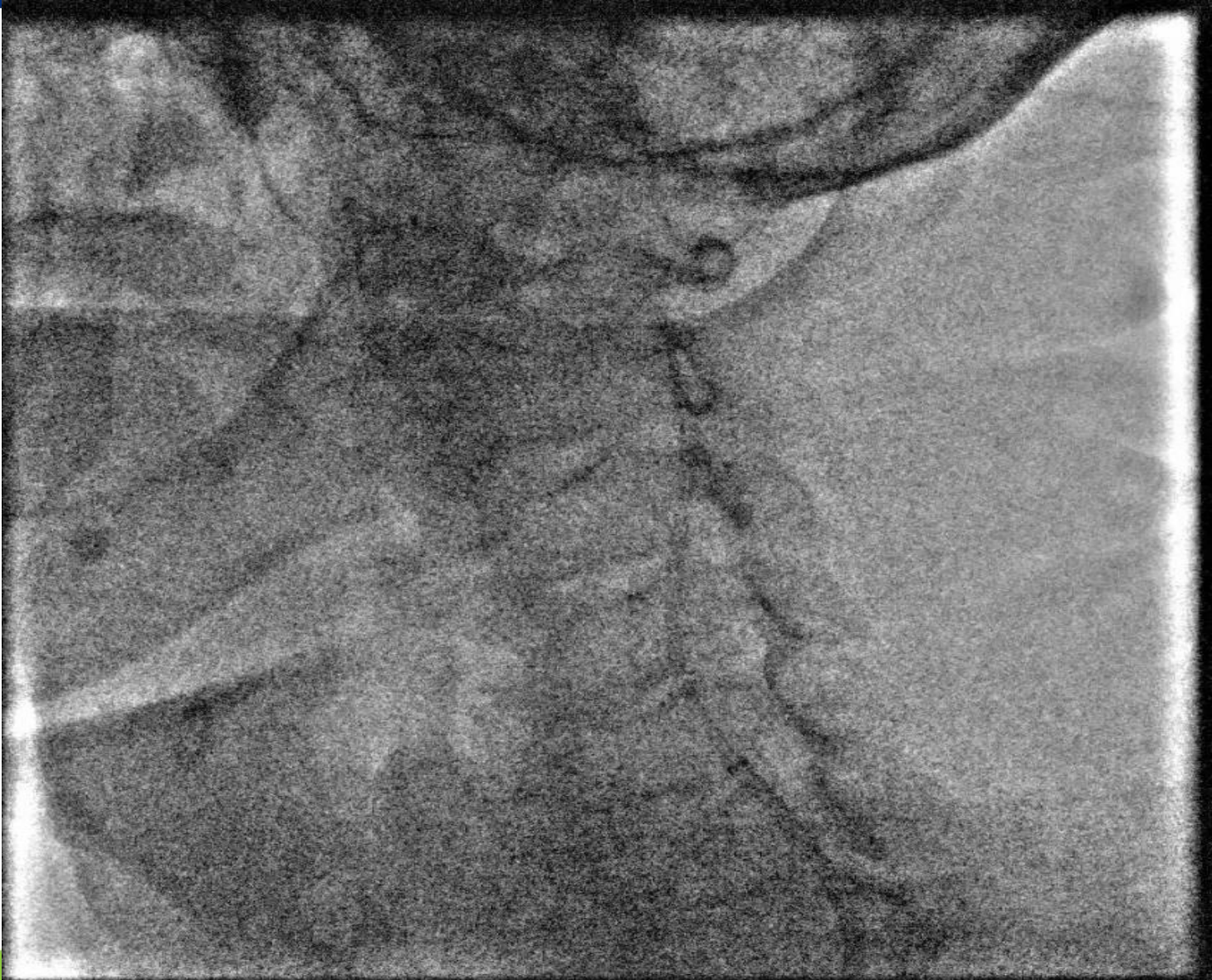


InspireMD

Be Careful With The Size !!!!

CGUARD™
Carotid Embolic Prevention System

ICCA
STROKE



InspireMD

Be Careful With The Size !!!!

CGUARD™
Carotid Embolic Prevention System

ICCA
STROKE

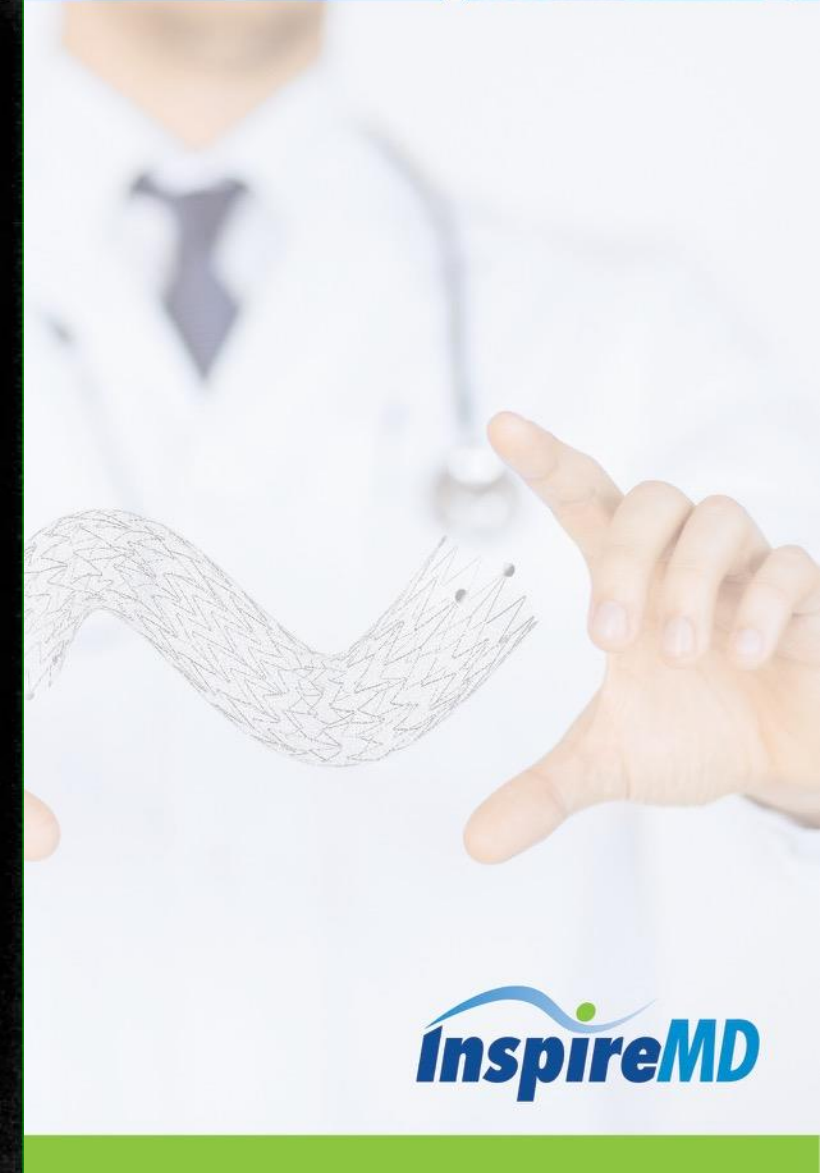
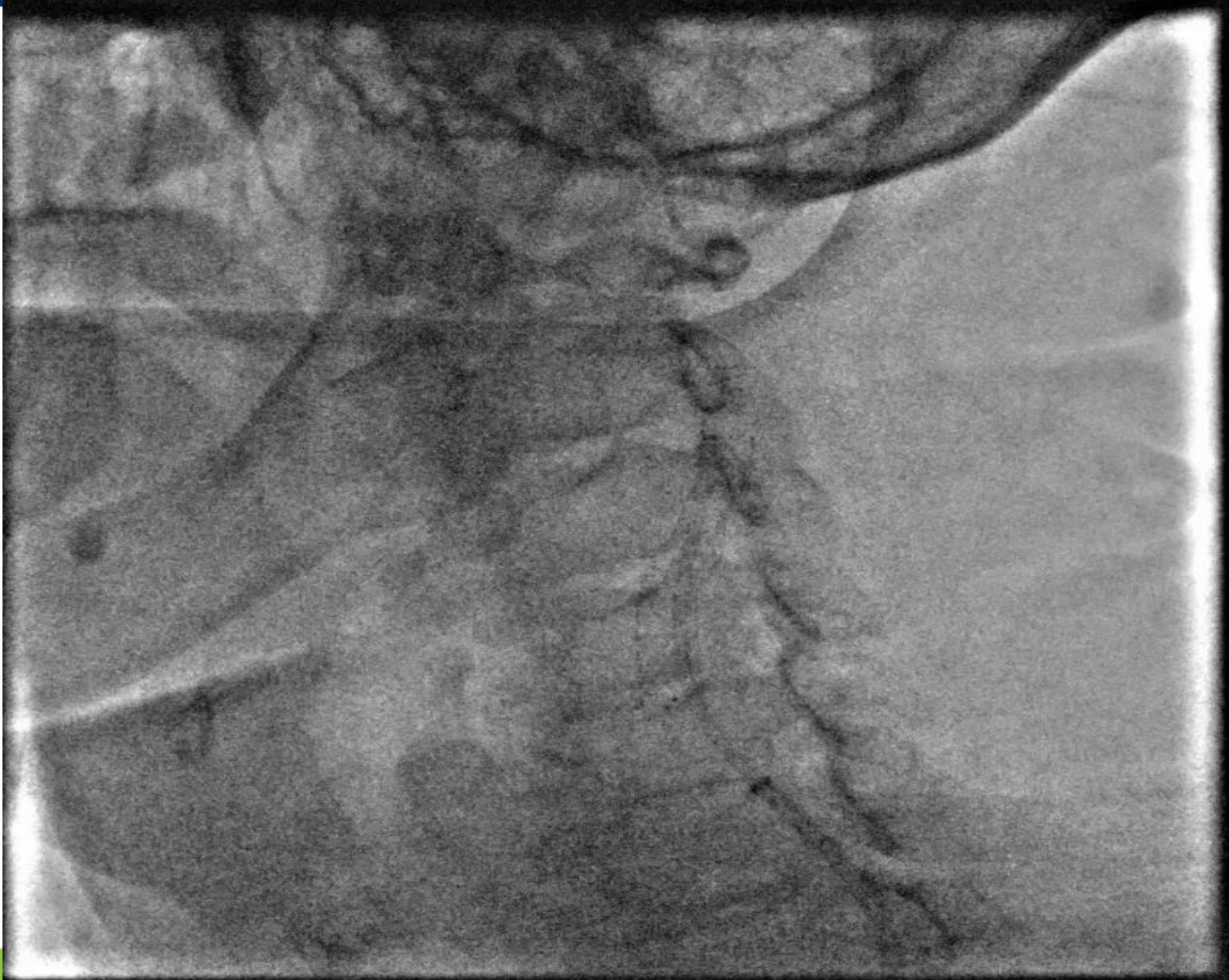


InspireMD

Be Careful With The Size !!!!

CGUARD™
Carotid Embolic Prevention System

ICCA
STROKE

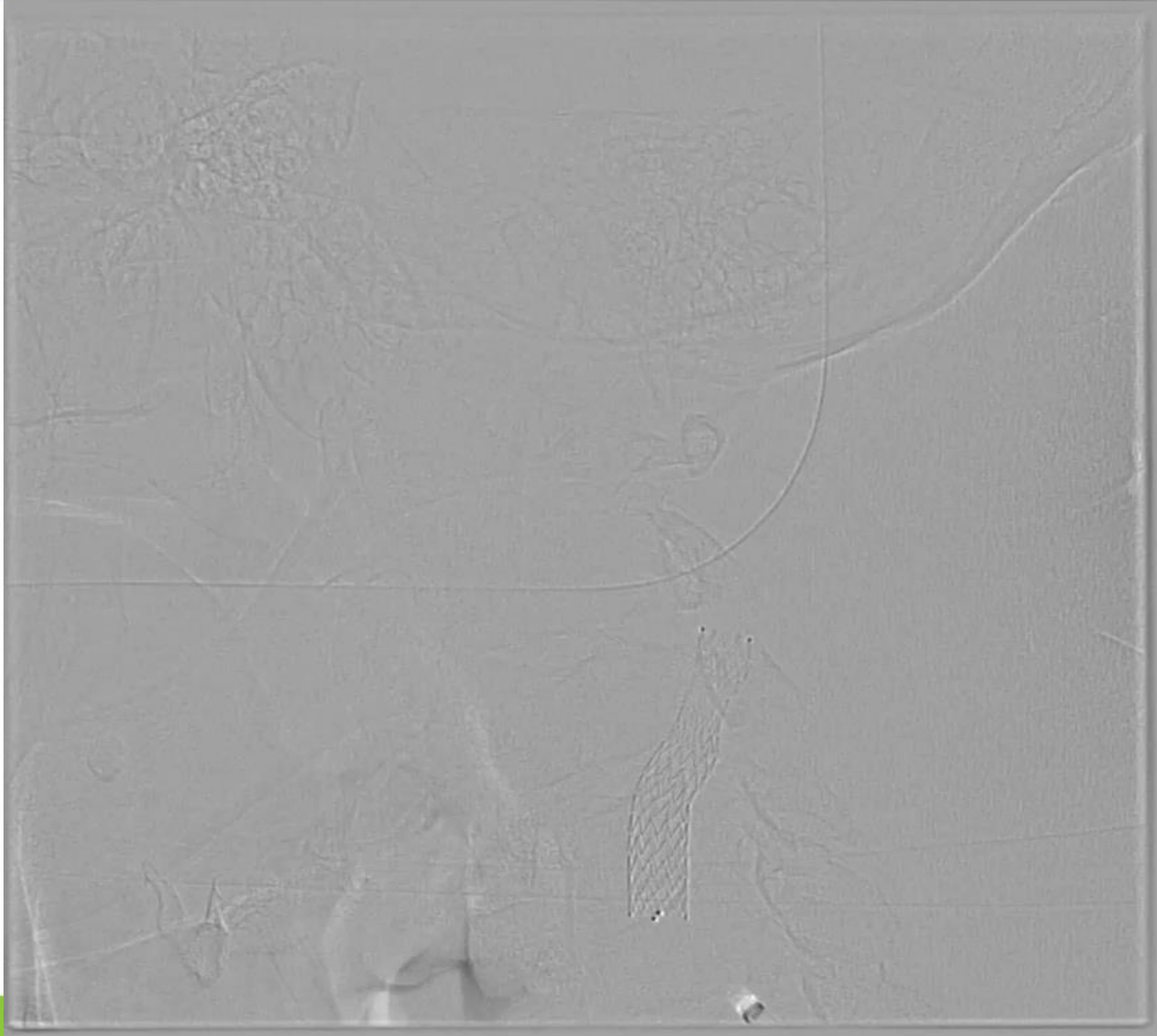


InspireMD

Be Careful With The Size !!!!

CGUARD™
Carotid Embolic Prevention System

ICCA
STROKE

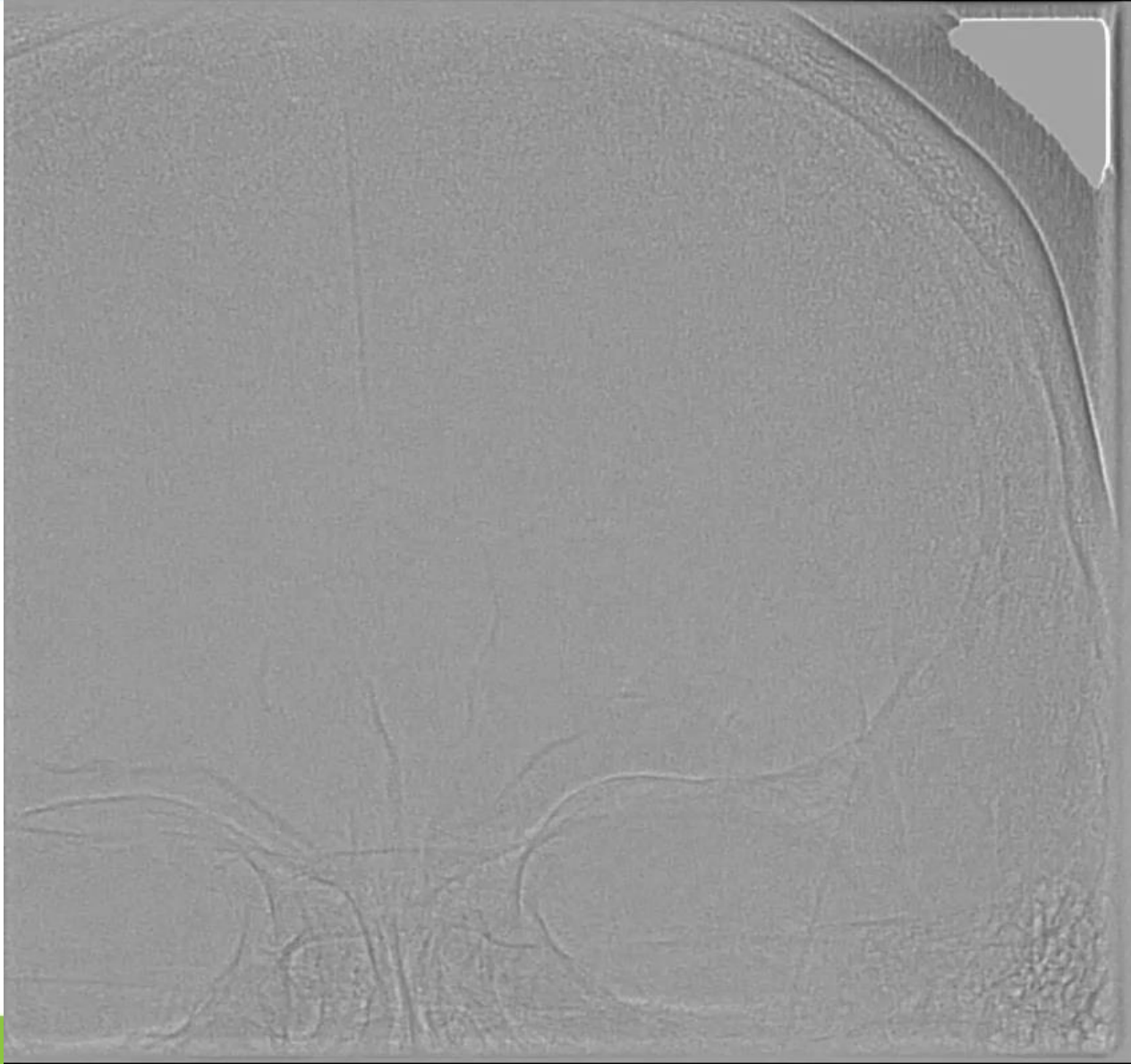


InspireMD

Be Carefull With The Size !!!!

CGUARD™
Carotid Embolic Prevention System

ICCA
STROKE



InspireMD

Clinical Case V

CGUARD™
Carotid Embolic Prevention System

ICCA
STROKE

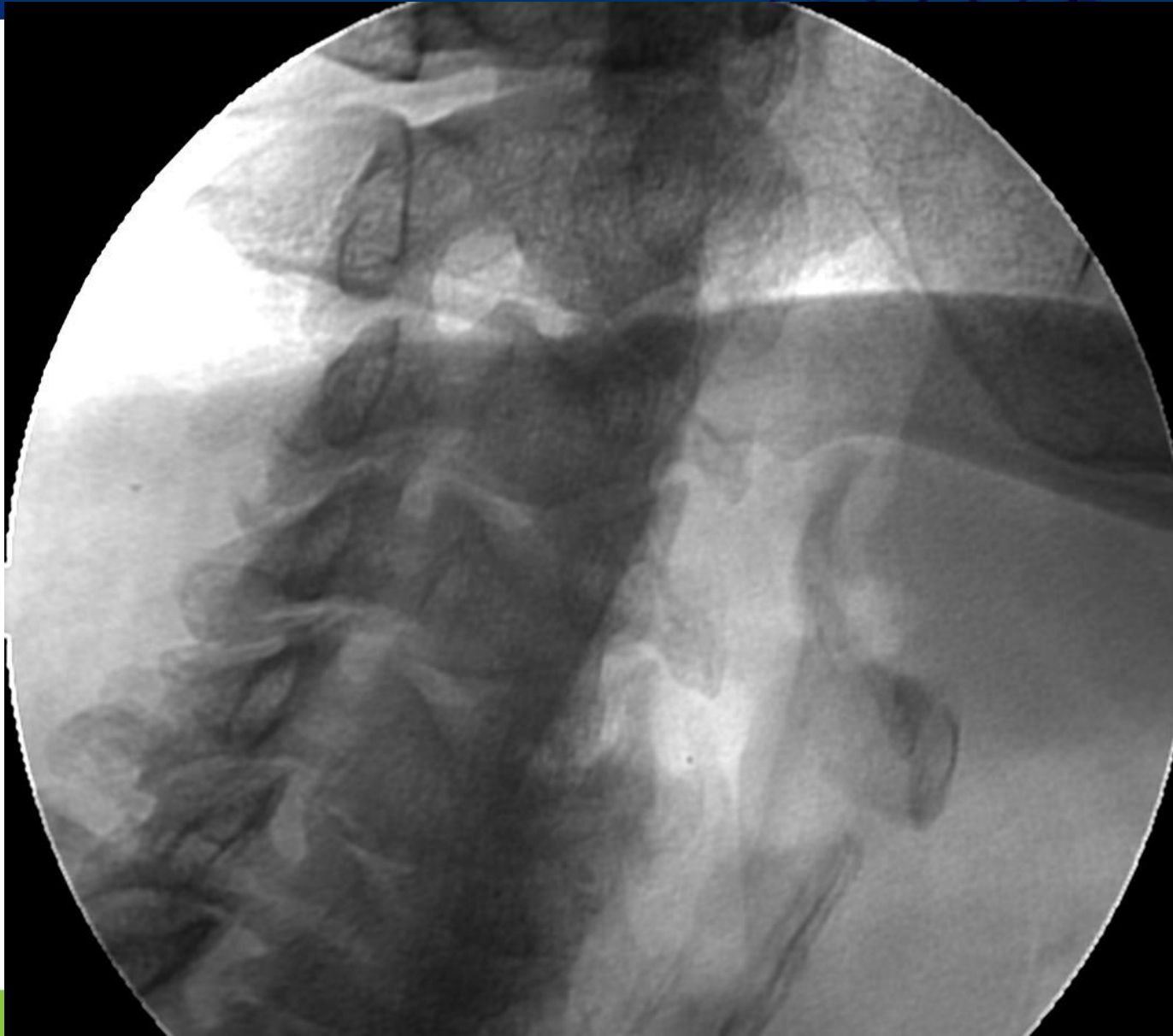
- 65 male, Hipertension, Former smoker, Dyslipidemia.
- 2/2018 - Left transient ischemic attack symptomatic by braquio-crural hemiparesia.
- Echo: 95% rigth stenosis of internal carotid artery.
- Normal renal function.

InspireMD

Transient Ischemic Attack

CGUARD™
Carotid Embolic Prevention System

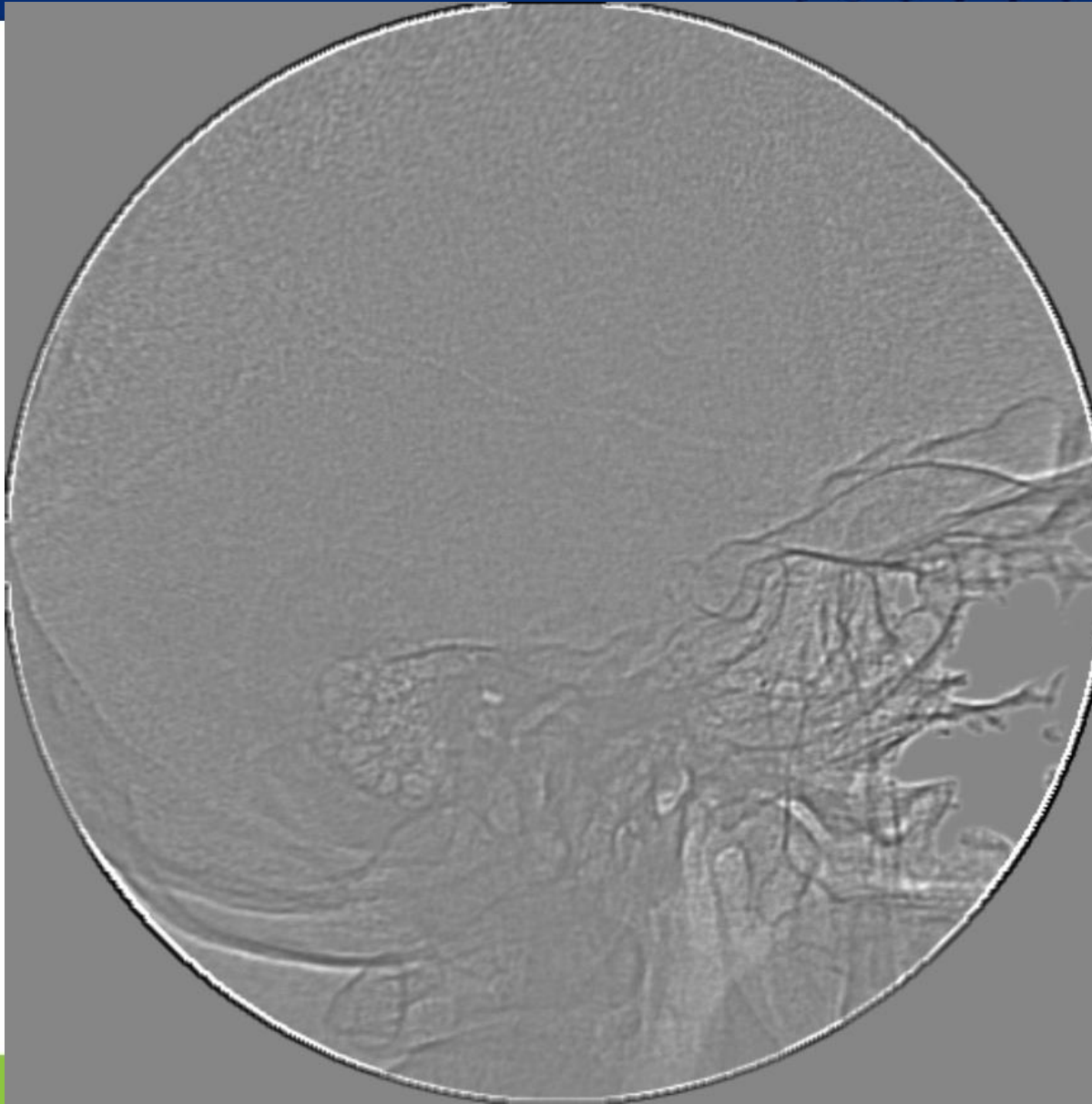
ICCA
STROKE



Transient Ischemic Attack

CGUARD™
Carotid Embolic Prevention System

ICCA
STROKE



InspireMD

Transient Ischemic Attack

CGUARD™
Carotid Embolic Prevention System

ICCA
STROKE



InspireMD

Transient Ischemic Attack

CGUARD™
Carotid Embolic Prevention System

ICCA
STROKE



Transient Ischemic Attack

CGUARD™
Carotid Embolic Prevention System

ICCA
STROKE

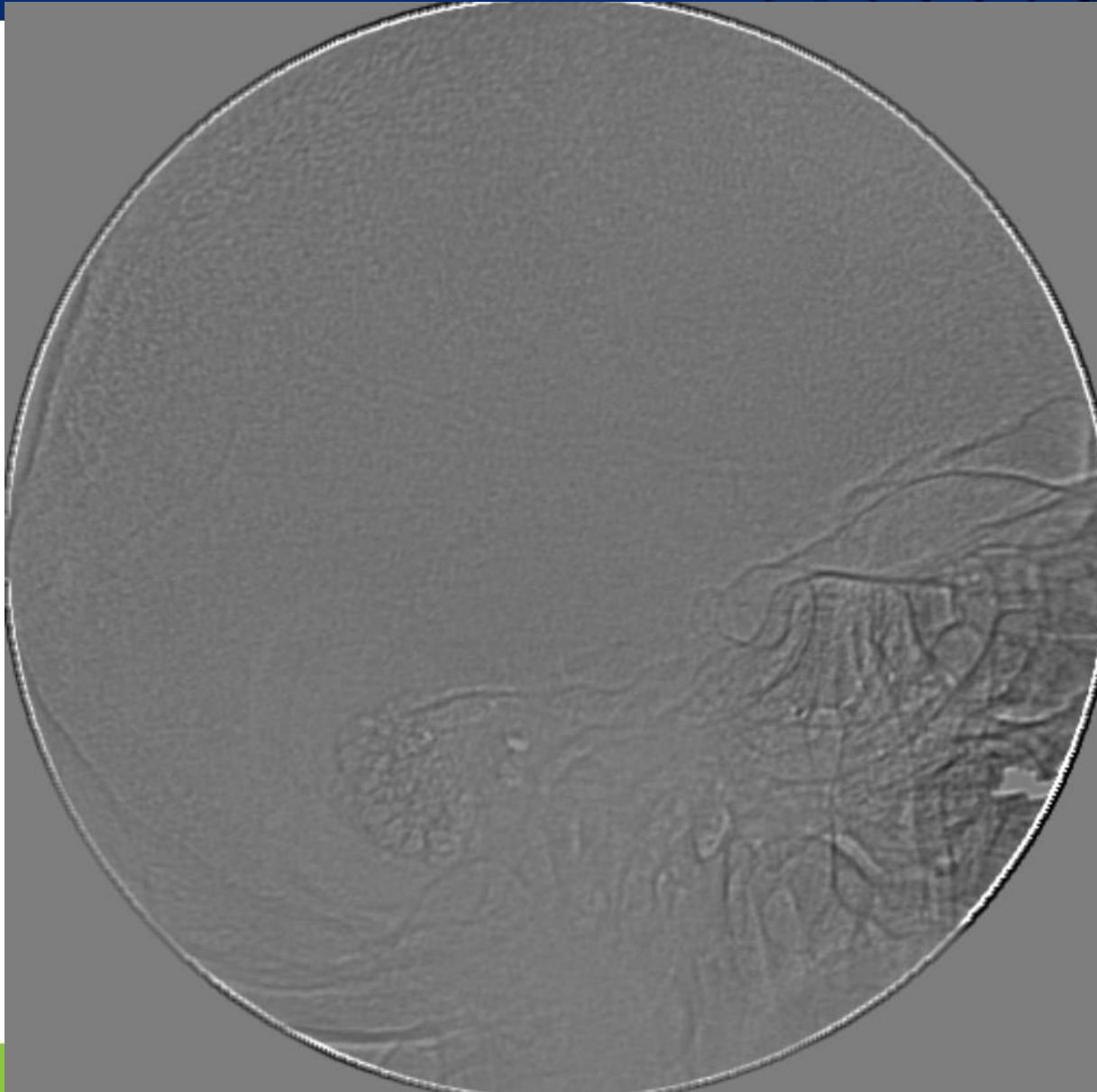


InspireMD

Transient Ischemic Attack

CGUARD™
Carotid Embolic Prevention System

ICCA
STROKE



InspireMD

Peripheral Intervention

CGUARD™
Carotid Embolic Prevention System

ICCA
STROKE

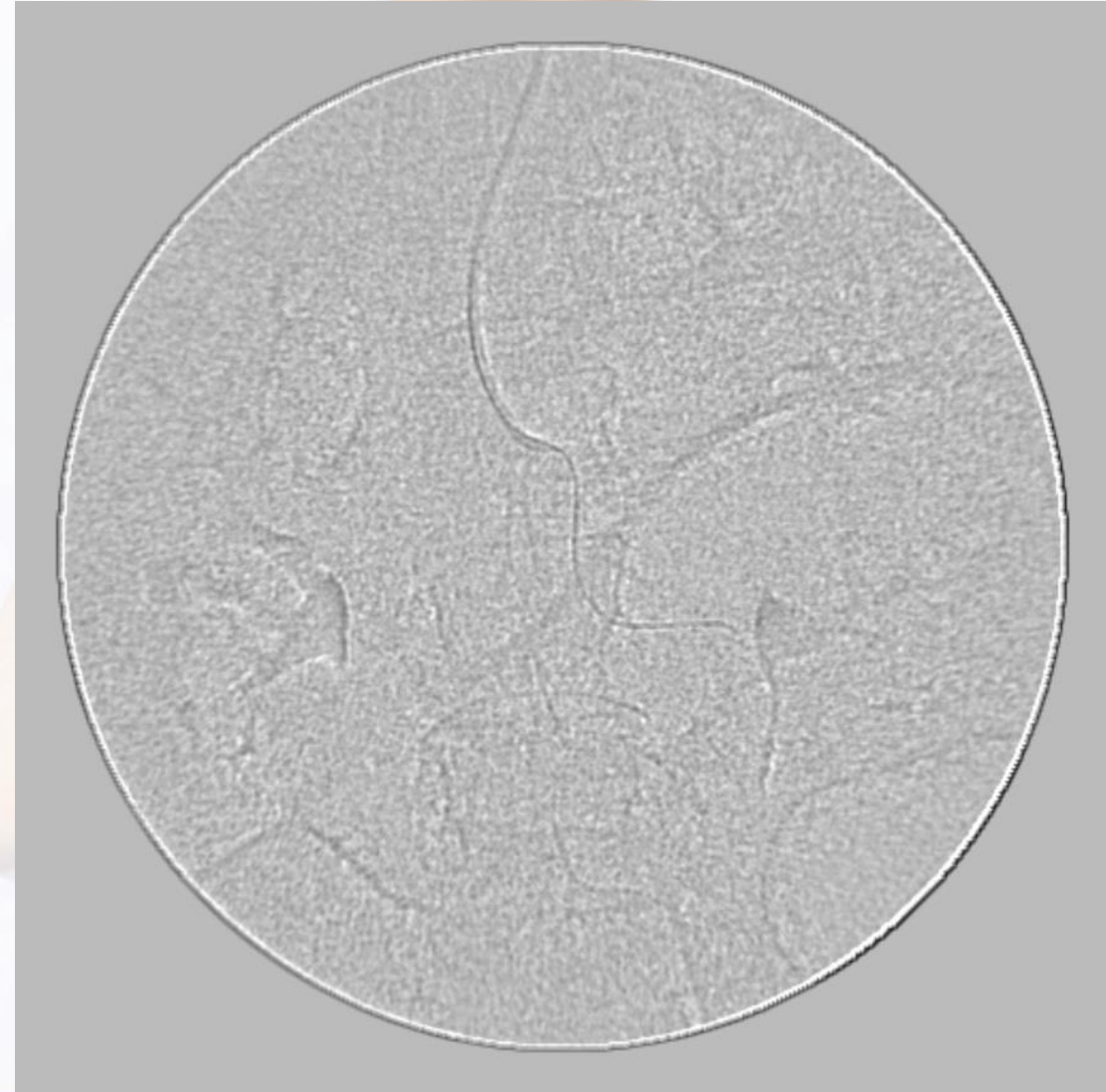
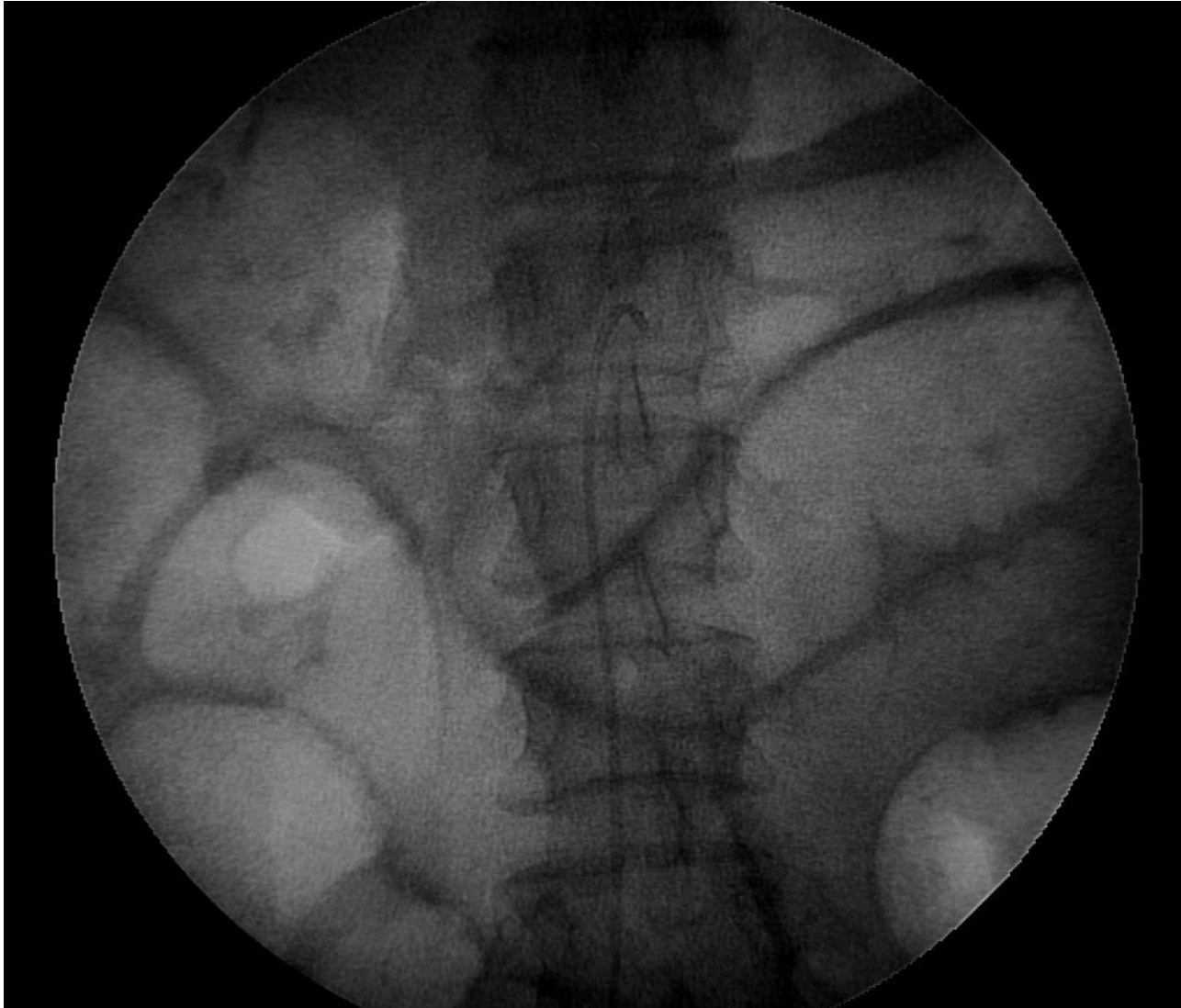
- 75 male, Hipertension, Former smoker, Dyslipidemia.
- Atrial fibrillation.
- Abdomial Pain.

InspireMD

Superior Mesenteric Occlusion

CGUARD™
Carotid Embolic Prevention System

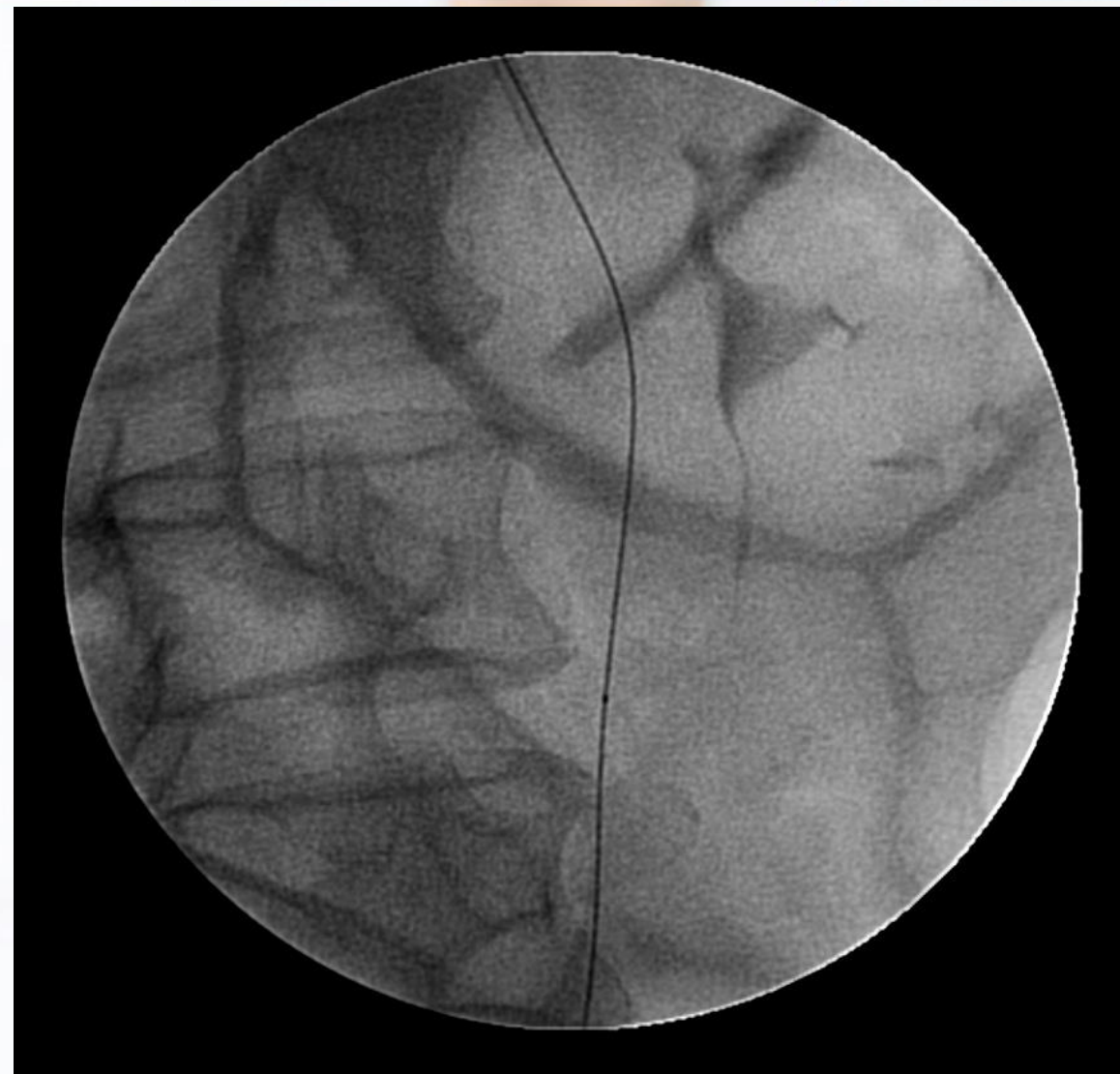
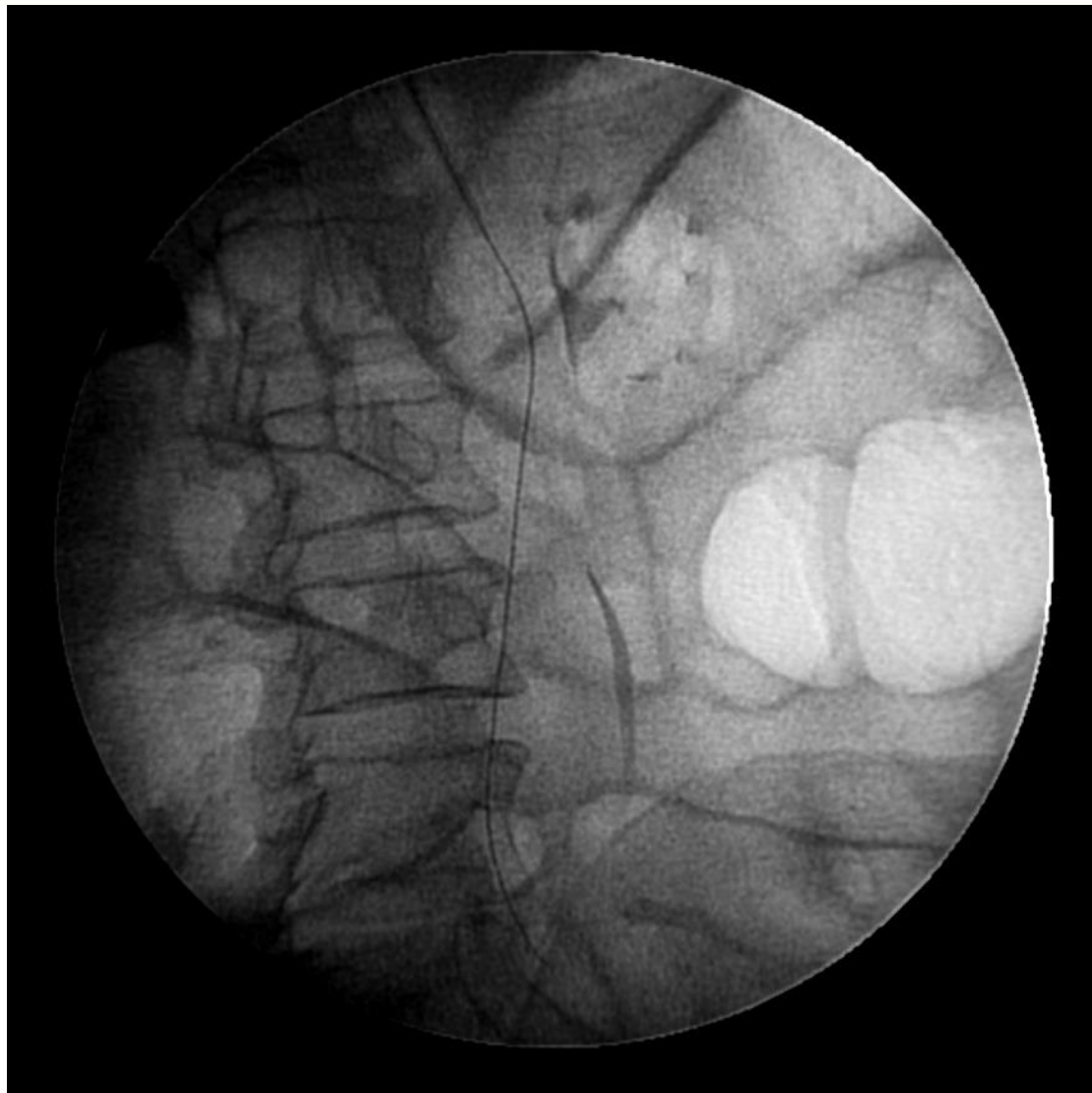
ICCA
STROKE



Superior Mesenteric Occlusion

CGUARD™
Carotid Embolic Prevention System

ICCA
STROKE



Superior Mesenteric Occlusion

CGUARD™
Carotid Embolic Prevention System

ICCA
STROKE



Superior Mesenteric Occlusion

CGUARD™
Carotid Embolic Prevention System

ICCA
STROKE



Superior Mesenteric Occlusion

CGUARD™
Carotid Embolic Prevention System

ICCA
STROKE



Thank You for your Attention

CGUARD™
Carotid Embolic Prevention System

ICCA
STROKE



InspireMD